

ioXT

Installation & Operation Guide

Version 10.4

Published: August 27, 2013



Because it matters.™

AJA[®]
VIDEO SYSTEMS

Table of Contents

Notices	4
Trademarks	4
Copyright	4
Contacting Support	4
Chapter 1: Introduction	5
Overview	5
Features:	5
Broadcast-Quality Conversion	6
Io XT Audio	7
Dual Link	7
Hardware-based Acceleration	7
AJA Software	7
System Requirements	8
What's In The Box?	8
Cable Connections	9
Connector Descriptions	9
In This Manual	10
Chapter 2: Installation	11
Installation Overview	11
Connecting to your Computer	12
Cabling the System	12
Typical System	12
Installing Io XT Software	14
Macintosh Software Installation	14
Windows Software Installation	20
Re-Installation & Repair	24
Genlock and Your System	24
Chapter 3: Operation	25
Using Io XT with Professional Video /Audio Software	25
AJA Control Panel Overview	25
Block Diagram Screen	26
Control Panel Operation	30
Control Screen	30
Format Screen	32
Input Select Screen	35
SDI Output Screen	36
HDMI Screen	38
Analog Out Screen	39
Video Setup Screen	40
Audio Setup Screen	41
Conversion Screen (Mac OS only)	42
DS Keyer Screen	44
Timecode Screen	45
Presets Screen	47
Firmware Screen	48
Info Screen	49

Chapter 4: Troubleshooting	50
If You Run Into Problems	50
Updating Software	50
Support	51
Appendix A: Specifications	52
Video Formats	52
Video Input	52
Video Output Digital	52
Video Output Analog	52
Audio Input Digital	53
Audio Output Digital	53
Audio Output Analog	53
Downstream Keyer	53
Up-Conversion	53
Down-conversion	53
Cross-conversion	54
SD to SD aspect ratio conversion	54
Reference Input or LTC Input	54
Machine Control	54
Appendix B: Safety and Compliance	55
Federal Communications Commission (FCC) Compliance Notices	55
Class A Interference Statement	55
FCC Caution	55
Canadian ICES Statement	55
European Union and European Free Trade Association (EFTA)	
Regulatory Compliance	56
Declaration of Conformity	56
Korean Compliance Statement	57
Taiwan Compliance Statement	57
Japanese Compliance Statement	58
Translated caution statements, warning conventions and warning messages	58
Before operating your AJA unit, read the instructions in this document	58
Warranty and Liability Information	66
Limited Warranty	66
Limitation of Liability	67
Index	68

Notices

Trademarks

AJA®, KONA®, Ki Pro®, KUMO® and XENA® are registered trademarks of AJA Video, Inc., Ki Pro Mini™, Io Express™, Io HD™, Io™ and “Work. Flow.” are trademarks of AJA Video, Inc. AirPort, Apple, the Apple logo, AppleShare, AppleTalk, FireWire, iPod, iPod Touch, Mac, and Macintosh are registered trademarks of Apple Computer, Inc. Final Cut Pro, QuickTime and the QuickTime Logo are trademarks of Apple Computer, Inc. Avid, Avid Media Composer and Avid DNxHD are trademarks of Avid Technology, Inc. All other trademarks are the property of their respective holders.

Copyright

Copyright © 2013 AJA Video, Inc. All rights reserved. All information in this manual is subject to change without notice. No part of the document may be reproduced or transmitted in any form, or by any means, electronic or mechanical, including photocopying or recording, without the express written permission of AJA Inc.

Contacting Support

When calling for support, have all information at hand prior to calling.

To contact AJA Video for sales or support, use any of the following methods:

Telephone: +1.800.251.4224 or +1.530.271.3190

Web: <http://www.aja.com/en/support/>

Support Email: support@aja.com

Sales Email: sales@aja.com

Chapter 1: Introduction



Overview

AJA's io XT provides professional-grade I/O for high-end computers using a Thunderbolt interface with 10Gbps available bandwidth. io XT is the ideal portable companion for lightning-fast video capture, playback and up/down/cross conversion. Designed for today's workflows, io XT provides a new interface for video Pro's working with 10-bit uncompressed, Apple ProRes 422, Apple ProRes 422 (HQ), XDCAM HD, DVCPRO HD, stereoscopic 3D workflows, and more.

io XT connects with a single Thunderbolt cable and provides a second Thunderbolt connector for storage, making it perfect for on set, or in the edit suite.

Based on the KONA 3G hardware, io XT provides 3G/Dual-link/HD/SD-SDI, Component Analog, and HDMI connectivity. The AJA Mac driver delivers extensive codec and media support within all professional 3rd-party Video applications.

io XT's 10-bit hardware conversion capability paired with a Thunderbolt RAID System creates a super-fast editing system, portable enough to fit in a backpack—with desktop level power.

Features:

- Two Thunderbolt ports (supports pass-through/"daisy-chaining")
- Two SD-SDI, HD-SDI, and 3G HD-SDI inputs and outputs
- Single link SDI 4:2:2 or 4:4:4; Dual-link SDI 4:4:4
- HDMI Input and Output (including output for stereoscopic monitoring to consumer 3D displays)
- Analog component/composite output, 10-bit
- Broadcast quality hardware-based 10-bit up-conversion
- Broadcast quality hardware-based 10-bit down-conversion
- Broadcast quality hardware-based 10-bit cross-conversion (1080 to 720 and 720 to 1080)
- DVCPROHD hardware scaling acceleration
- HDV hardware scaling acceleration

- Dynamic RT Extreme hardware acceleration
- Broadcast quality hardware-based 10-bit SD aspect ratio conversion (anamorphic to letterbox, etc.)
- 16-Channel Embedded SDI audio
- Eight channels analog audio output (using Tascam-style DB25-type cable)
- Front panel LED VU meters and Headphone output w/level control
- Reference In/LTC In (selectable)
- LTC Output
- RS-422 control via 9-pin
- Rugged Chassis, Small Size
- 12V DC, 4-pin XLR Power (AC adapter included)

Broadcast-Quality Conversion

Io XT features hardware-based full 10-bit broadcast quality motion adaptive SD to HD up-conversion, HD to SD down-conversion and HD to HD cross-conversion.

The quality of the conversion features found in the Io XT is virtually identical to AJA's award winning stand-alone converter products used throughout the post production market. The Io XT built-in up converter uses a full 10-bit path, fully motion adaptive de-interlacing, and large multi-point digital interpolators. Down-conversion uses large multi-point digital interpolators, anti-alias filtering and interpolation.

Cross-conversion is high-quality hardware-based, providing capability to streamline dailies and offers true broadcast picture quality in realtime. Because these functions are in hardware, they are available full time, all the time—with no CPU load. Such conversions are useful for cost effective monitoring, making standard definition dubs of an HD project, or up-converting from a standard definition project to an HD deliverable.

About Primary & Secondary Video Formats

In Io XT operation, the Primary Format is the media format written to disk and used in your project. The Secondary format is that which may be input for capture or output from Io XT to VTRs or other devices. Down-conversion may be applied to an input or on output.

The Primary Format menu allows you to select the video format used in your current project.

NOTE: In some cases the application you use with the Io XT will automatically set the Primary Format, overriding the user's selected primary format in the AJA Control Panel.

Conversion is performed based on the Primary or Secondary Format settings. Io XT can down-convert the input format (when designated as a Secondary Format input) to the selected Primary Format. Or you can set a Secondary Format output that will be a down-conversion of the Primary Format.

NOTE: When converting an Input to the Primary Format, select the Secondary Format option that has (I), for input only, appended to it. Conversely, when converting an Output from the Primary Format, you must select an output signal with (O) for output only.

Convert Mode

Convert Mode allows selection of a mode for conversion between High-definition and Standard-definition formats. The choices offered depend on the AJA capture device present and the Primary and Secondary format chosen. Io XT supports up-, down-, and cross- conversion plus SD-to-SD aspect ratio conversions.

All conversions use AJA 10-bit hardware inside the Io XT.

For example, to do a down-conversion on an HD input:

Set the Primary Format as an SD format

Select the correct HD format with an (I) input designation for the Secondary Format, then

Choose a “– Secondary” Video Input type

Down-conversion display mode choices that may be available include:

- Anamorphic: full-screen
- Letterbox: image is reduced with black top and bottom added to image area with the aspect ratio preserved
- Crop: image is cropped horizontally to fit new screen size

This parameter applies to using the Ki Pro Rack to transfer data.

Video Formats For a complete list of supported video formats, see [“Video Formats” on page 52](#).

Io XT Audio

Io XT provides up to 16 channels of SDI embedded audio. The front panel has a mini TRS headphone output with a lockable level control knob.

For analog audio output monitoring, Io XT provides a DB25 connector with eight channels of audio to be used with industry standard Tascam-style audio breakout cables. The front panel has an eight-channel VU meter display to monitor output levels.

Dual Link

Io XT supports Dual Link HD-SDI (4:4:4). Io XT supports the ingest and output of SMPTE-372M compliant 4:4:4 RGB video and high-bandwidth 4:2:2 1080p 50, 1080p 59.94, and 1080p 60 at 10-bit.

Hardware-based Acceleration

Io XT offers DVCPROHD, HDV, and Apple RT Extreme hardware acceleration. This is how Io XT accelerates DVCPROHD, HDV, and Apple RT Effects:

A precision hardware scalar in Io XT does what the Apple computer's processor would otherwise have to do—scaling of less than full-raster HD (DVCPROHD and HDV) to full-raster size. This speeds up the system while scaling at full 10-bit broadcast quality.

The Io XT advanced scaling engine takes the native frame (long GOP 1440 HD) and outputs it via hardware-in real time. Precision AJA circuitry re-sizes the video to full-raster 1920 x 1080, providing instantaneous playback of HDV captured for both monitoring and recording.

Io XT can provide real time monitoring and playback to both HD and SD monitors and decks via the realtime hardware scaler and down-converter on board.

AJA Software

AJA's Io XT software and hardware were developed for powerful integrated video/audio capture, editing, and production with a variety of 3rd-party software. With an Io XT and qualified Thunderbolt-enabled computer, you have the ultimate system for standard and high definition production, post-production, broadcast, and streaming work. AJA software is available for download at the AJA website.

- AJA QuickTime™ drivers for tightly integrated hardware/software operation.

- AJA Control Panel for source selection and controlling Io XT within either Mac or Windows environment, Input Pass through, and more. AJA Control Panel uses a block diagram to show visually what is happening inside Io XT.
- Supports popular 3rd-party Professional Video Applications from Adobe, Avid, Apple, Telestream, and more.

NOTE: For a complete software compatibility list, see the AJA website link:

<http://www.aja.com/en/category/edit/compatibility>

System Requirements

For best performance AJA recommends:

- OS 10.7.5/10.8.4 or later
- Windows 7/8 With all updates
- 2.5GHz dual core i5 or better
- 2.0 GHz quad core i7 or better
- 4GB RAM Minimum, 8GB Recommended

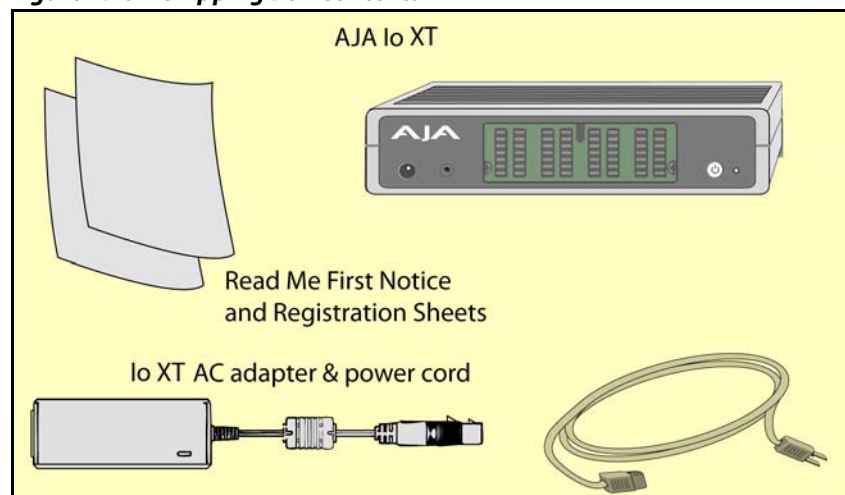
See Software Vendor system requirements for GPU recommendations and additional hardware requirements and recommendations.

What's In The Box?

As you unpack the shipping box(es), carefully examine the contents. Ensure you received everything and that nothing was damaged during shipment. If you find any damage, immediately notify the shipping service and supply them with a complete description of the damage. AJA will repair or replace damaged items. If you find shipping damage, contact your AJA dealer or distributor for details on how to have your Io XT repaired or replaced.

Save packing materials and the shipping box. If you ever require service or move your system—use the packaging materials and box for safe shipment.

Figure 1. Io X Shipping Box Contents



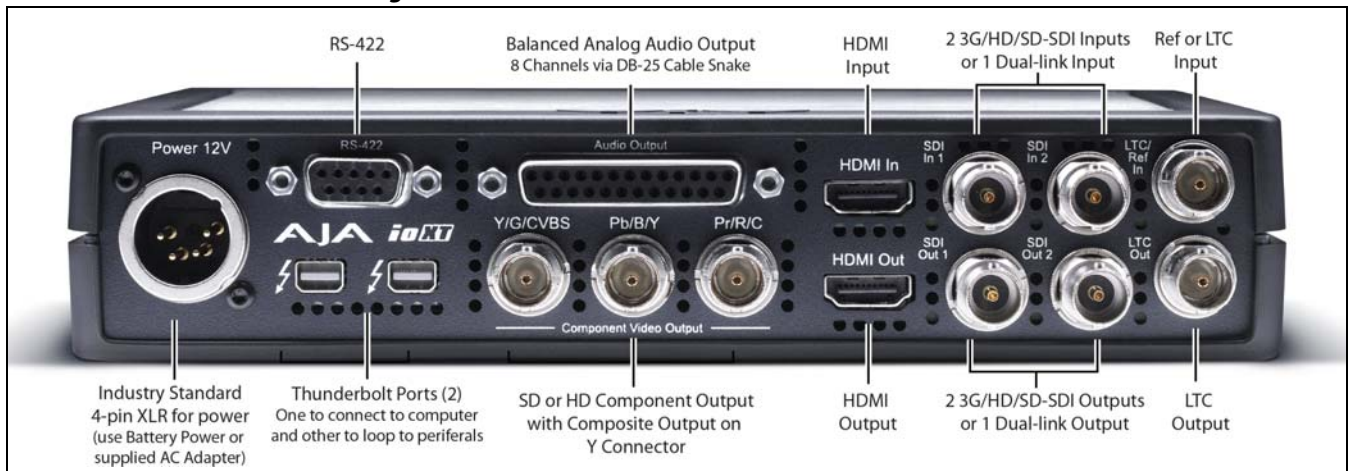
When you unpack your AJA io XT, you'll find the following components:

- io XT
- 12V power adapter and power cord
- Read Me First Notice—Contains late-breaking news and/or errata related to io XT and the documentation.
- Registration Sheet—allows you to register your io XT by mail or online (details provided).

Cable Connections

io XT connections are made directly to the unit's rear connector plate. Eight audio output channels are available through the Tascam-style DB25 connector.

Figure 2. io XT Connectors



Connector Descriptions

The following section describes the connectors offered on the io XT chassis.

HD/SD SDI Input and Output

BNC connectors are provided on io XT for two HD/SD-SDI inputs and two HD/SD-SDI outputs. The input and output support video and embedded 24-bit digital audio. Use SDI wherever possible for the best quality 10-bit uncompressed video input, capture and output. If peripheral equipment has a variety of inputs/outputs, look to see if it has SDI I/O, and use it where possible. Most high-end professional broadcast equipment supports SDI (VTRs, cameras, media storage servers, etc.).

HDMI Input and Output

Two HDMI connectors on the io XT provide input and output of HDMI video and multi-channel embedded audio. HDMI v1.3a capability at 30 bits per pixel allows full support of the latest 10-bit monitors.

HDCP is not supported on either input or output. io XT HDMI output does not have HDCP, and input sources having HDCP are not supported. The HDMI input is designed to support long cable runs—up to 100 ft. when using 22 or 24AWG HDMI cable, or up to 50 ft. using 28 or 30AWG HDMI cable. The HDMI output supports standard HDMI cables only.

The AJA Control Panel allows selection and adjustment of some HDMI parameters; please see Chapter 3—for more information on Control Panel operation.

RS422 Machine Control A female DE-9 connector on Io XT provides connection for VTRs, camcorders, disk media servers, and other devices using RS422 SMPTE (Sony) protocol. (Connector pinout is listed in Appendix A, see “[Machine Control](#)” on page 54.)

Component Video Output Io XT features a group of 3 BNC connectors for output of component, composite and Y/C functions. The signals are labeled on the BNC connectors on the rear panel of Io XT.

A Note About YPbPr: Component Video, or YPbPr, has been given several names over time. YUV, Y/R-Y/B-Y, and YCbCr, are just some examples. Although these various formats have some differences in levels, they are all basically the same. Io XT uses the modern YPbPr terminology exclusively. Io XT supports three different types of YPbPr: SMPTE/EBU N10, Betacam (NTSC), and Betacam (NTSC Japan). These three formats differ in level only and are configured via the AJA Control Panel.

Reference Video and LTC Input Two BNC connectors on Io XT provide reference Input and Output. The Reference Video input can also be used for LTC input. The selection of Reference (sync) or LTC is set using the Io XT Control Panel.

In Video Pass-through mode, these connectors are effectively loop-through. Supplying reference signal to the Reference input allows you to synchronize Io XT outputs to your house analog reference video signal (or black burst). If you have a sync generator or central piece of video equipment to use for synchronizing other video equipment in your studio, then connect its analog composite output here. When Io XT outputs video, it uses this reference signal for locking. When connecting a reference video source, the locking signal should be the same format as the Primary format selected in the Io XT Control Panel. It is possible in some circumstances to use an alternate format video signal as long as the basic frame rate is compatible.

In This Manual

- Chapter 1** Is the introduction you’re reading, listing features, box contents, and system requirements.
 - Chapter 2** Provides complete instructions for installing and configuring the AJA Io XT. The user is guided through unpacking, cabling the Io XT, installing Io XT Mac Software, then getting it up and running. Important configuration information is also provided on video settings and use of genlock/external reference.
 - Chapter 3** Discusses operational aspects of Io XT and how to work with 3rd-party software.
 - Appendix 4** Discusses troubleshooting problems with your system and what to do when there’s a problem you can’t solve.
 - Appendix A** Presents a list of technical specifications for the product.
 - Appendix B** Provides important Safety and Compliance information.
- The balance of the book provides Warranty information and an Index.

Chapter 2: Installation



Installation Overview

The installation and set up of an Io XT is very simple. The steps of installation and configuration are outlined here and each of these steps are explained in greater detail on the remaining pages of this chapter:

1. Unpack the shipping box (see "*What's In The Box? on page 8*".)
2. If not previously installed on your Thunderbolt equipped computer, ensure that appropriate application software is installed as detailed in its user documentation.
3. For latest System Compatibility and Software Version information for Io XT visit:
<http://www.aja.com/en/products/io-xt/#/overview>
4. Install the latest AJA Io XT software on your computer from the AJA website:
<http://www.aja.com/en/products/io-xt/#support>

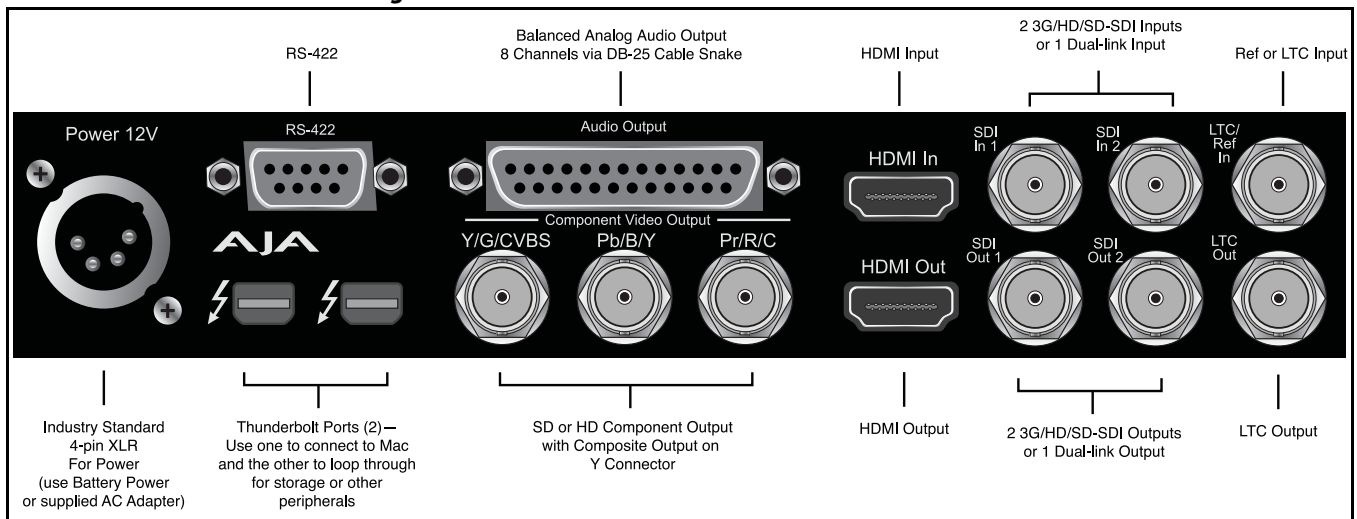
Start by installing the Io XT driver package with AJA Control Panel and then finally install any AJA plug-ins for 3rd-party software.

5. Connect a Thunderbolt cable between the computer and the Io XT.
6. Power the Io XT (AC supply or battery) and turn on the unit using the power button on the front.
7. Cable the system audio and video sources, VTR, audio monitor, and video monitor.
8. When you run the AJA Control Panel, you'll notice that the Io XT is auto-discovered as long as it is properly cabled and powered up.
9. Please read the AJA Control Panel operation section of this manual. (The latest version can be downloaded from the support page provided in step 4 above.)

Connecting to your Computer

1. With your **computer off**, connect a Thunderbolt cable to one of the two Thunderbolt ports
2. Connect the other Thunderbolt port to storage or other desired peripherals.
3. For power either:
 - Assemble the Power Adapter and cable and connect to the lo XT 12V Power connector and to AC supply
 - Or connect a 12 volt battery using an XLR connector (not included).
4. Connect your desired Video I/O, Audio monitoring, reference, and machine control cables. (Refer to **Cabling the System** following.)
5. Turn on lo XT using the front power switch.

Figure 3. lo XT Connections



Cabling the System

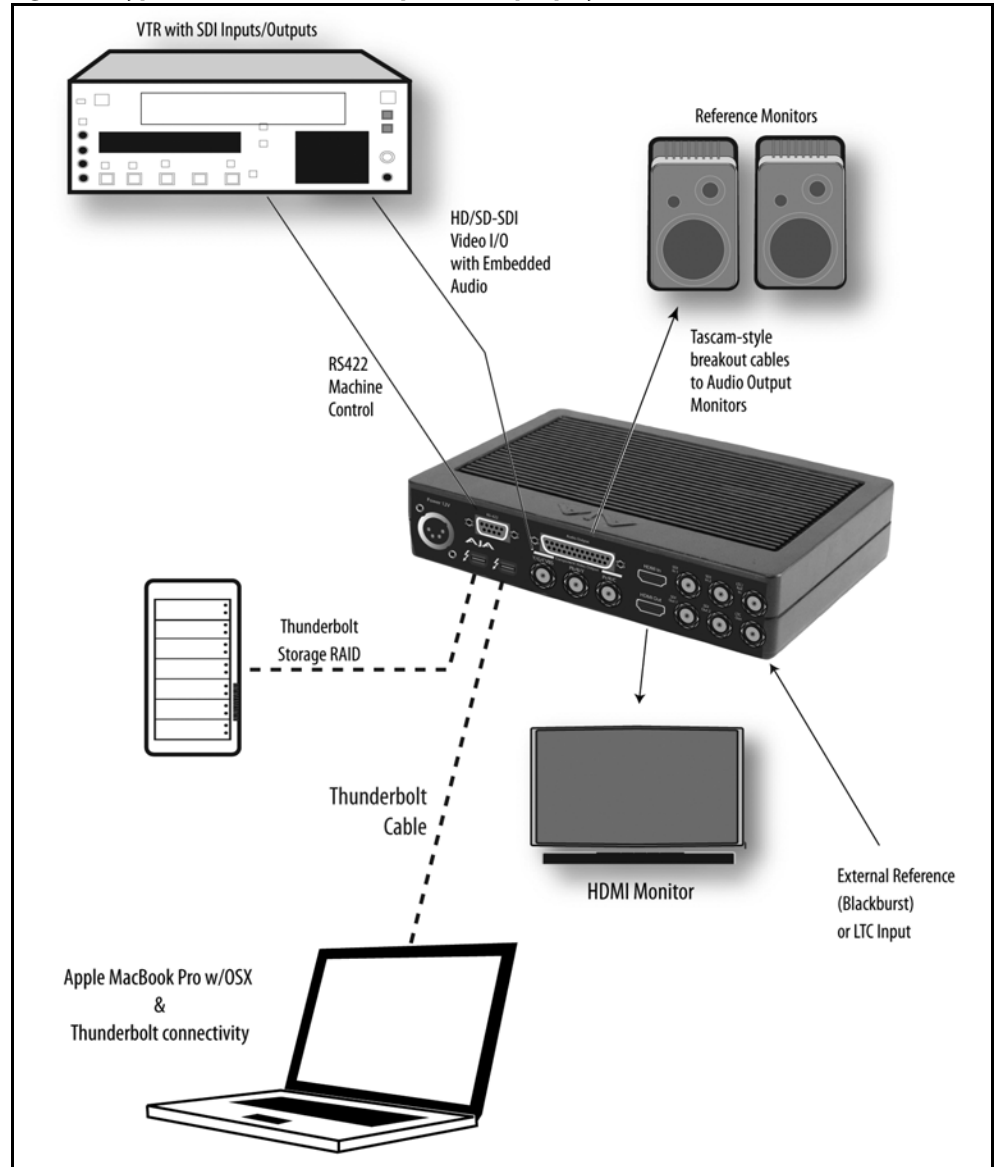
Typical System

Your system may differ depending on VTRs, audio monitoring, and video monitoring.

1. If desired, connect your house reference sync to the lo XT *Ref/LTC* connector (BNC). The second lo XT Ref Loop connector (if used in Pass through mode) can be connected to the VTR or terminated with a 75-ohm terminator. If instead using LTC timecode input, connect to the Ref/LTC input.
2. Connect an HDMI Video Monitor to the lo XT HDMI Out connector. *Or instead, use the Component Analog Video Out* BNC connectors to go to an analog monitor.
3. Connect a 9-pin DE-9 machine control cable between your VTR's RS422 control port and the lo XT RS-422 machine control connector.
4. Connect two SDI cables between lo XT and your digital VTR (Digital Betacam etc.): one from lo XT *SDI In* to the VTR SDI Out, and one from lo XT *SDI Out* to the VTR SDI In. The lo XT SDI connections have embedded audio so the VTR must be configured accordingly.

5. Use a Tascam-style audio breakout cable to connect stereo output for audio monitoring.

Figure 4. Typical Thunderbolt Compatible Laptop System Connections



Installing lo XT Software

Go to the AJA website and download the latest lo XT driver software containing the AJA Control Panel application. While there, also download any AJA plug-ins for 3rd-party applications (such as Adobe and Avid). All of these software installers can be found here:

<http://www.aja.com/en/support/downloads/>

System software updates may occasionally become available to AJA lo XT owners on our website (www.aja.com). We recommend checking occasionally for both software updates and additional product information.

NOTE: *If your computer has previously had another video capture or multimedia device installed, ensure you uninstall any related software before installing lo XT. This will prevent any hardware or software conflicts.*

If you add lo XT supported applications at a later date and have not previously installed the appropriate drivers, you must run the install program again selecting the appropriate application support software to be installed.

Macintosh Software Installation

NOTE: *If you have trouble installing lo XT software, turn off any virus protection and security software that you may have installed on your computer and try again.*

Mountain Lion OS and Gatekeeper: With the addition of Gatekeeper functionality in Mac OS Mountain Lion, you should go to System Preferences>Security & Privacy and choose to allow "Mac App Store and identified developers."

Figure 5. Mac Security & Privacy Gatekeeper Setting



1. Locate lo XT software downloaded from AJA.
2. Double-click the package to log on and begin software installation. Start by installing the lo XT driver package with AJA Control Panel and then finally install any AJA plug-ins for 3rd-party software.

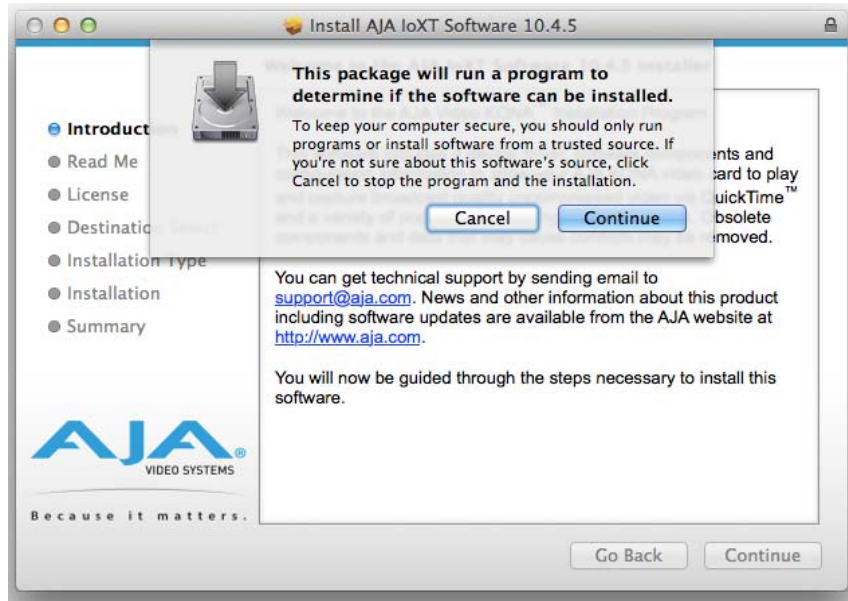
NOTE: *The system will respond by asking you to authenticate who you are as currently defined on your OS X user profile. Enter the proper name and password at the Authenticate prompt; if you have multiple users defined, ensure that you log on as a user with administrator-level authority.*

Figure 6. Log On Authenticate Prompt



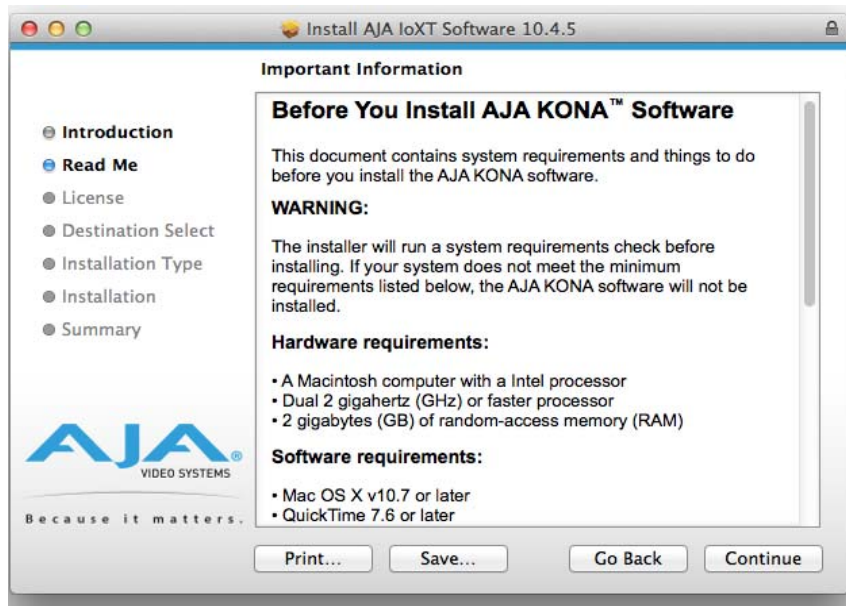
3. Click on the *Install Software* button after entering a valid user and password.
4. The installer will launch and you'll see a series of installer screens.
5. On the following pages, we show the series of screens you'll see when installing the lo XT driver software package.
6. When you launch the installer, you'll see a series of installer screens.

Figure 7. Initial Installer Screen



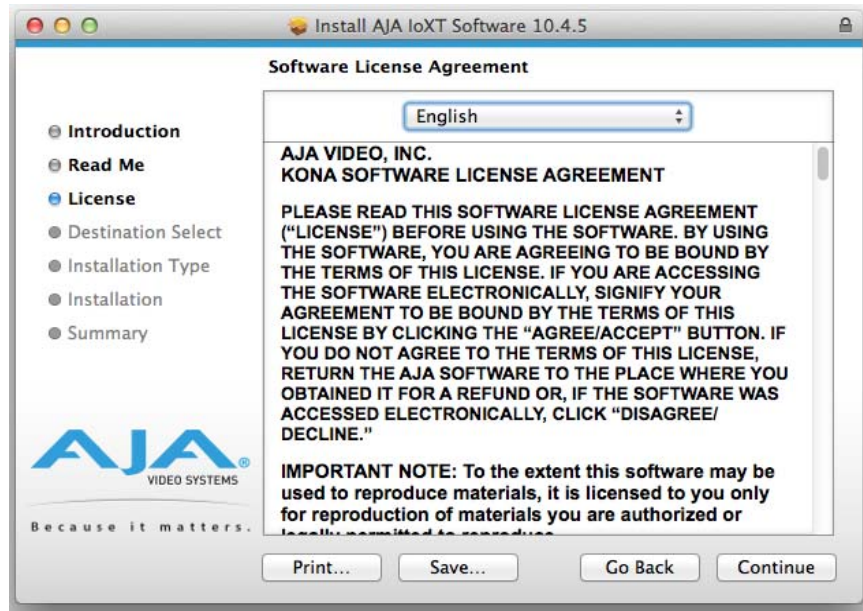
7. Click *Continue* to begin installation.
8. The next screen lets you know that the installer will check your Mac to ensure it has the hardware and software resources required (“*System Requirements*” on page 8).

Figure 8. System Check Installer Screen



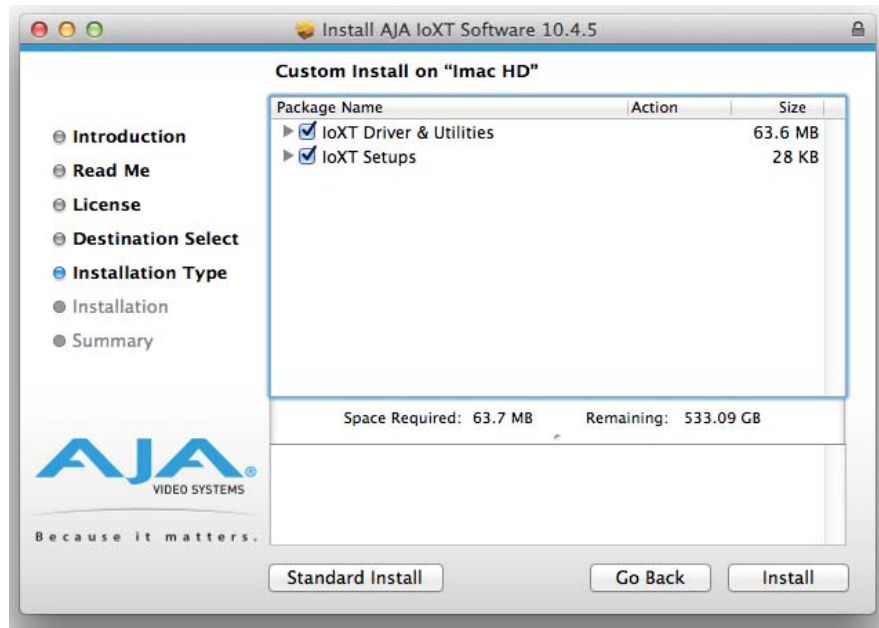
9. Read and agree to the Software License Agreement.

Figure 9. lo XT Software License Agreement Screen



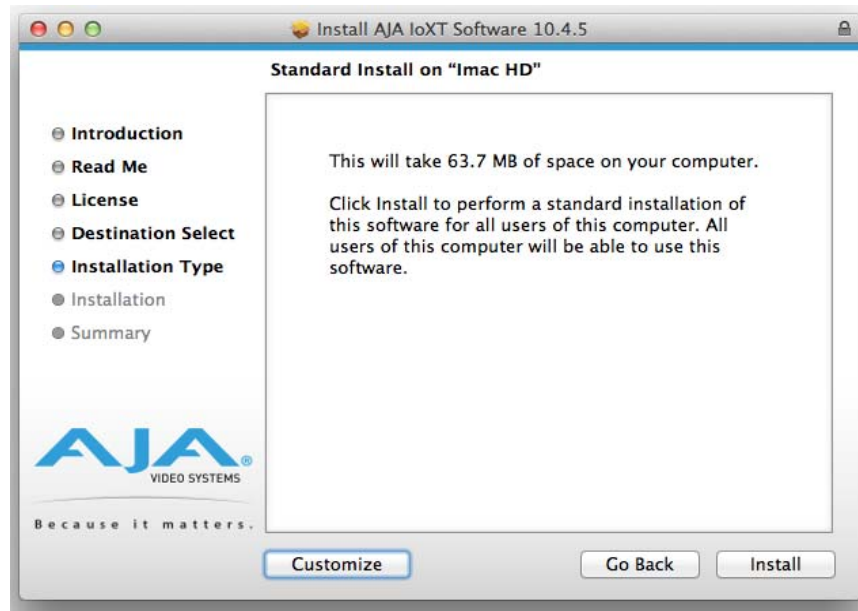
10. The next screen shows all the available drives on the Mac Pro. Click on the drive that contains your system files (Apple default is "Macintosh HD"). A green arrow will point to the drive you've selected. Click the *Continue* button to proceed with installation.
11. At the next screen, select the "lo XT Setups" checkbox. Check any Easy Setups that you want to use (or all of them) and then click the *Continue* button to place the software on the drive you previously selected. Some 3rd-party applications provide native setups so you can uncheck the "loXT Setups" checkbox before clicking *Continue*.

Figure 10. Installer Screen, Select Easy Setups to be Installed



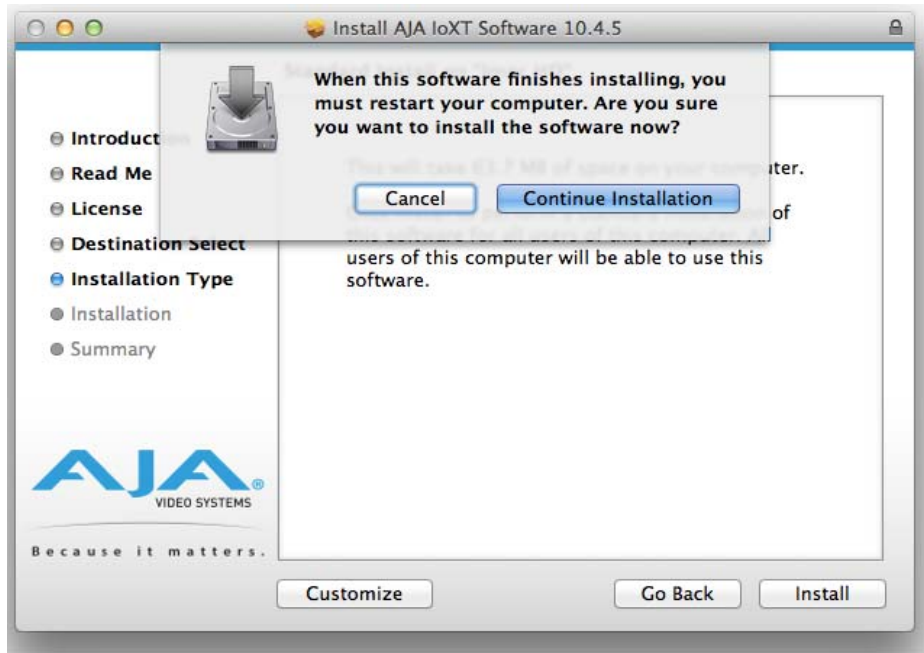
12. The installer tells you how much room the installation will take and prompts you to click *Install* to begin (or go back). Click the *Install* button to proceed.

Figure 11. Installer Screen, Space Reminder



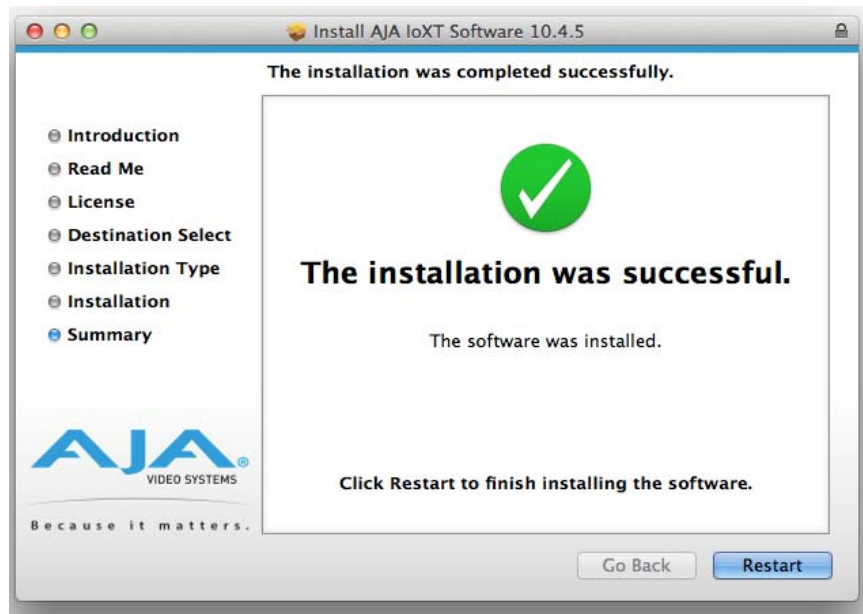
13. Next, the system will display a reminder that you'll have to Restart the Mac after installation concludes. Click *Continue Installation*.

Figure 12. Installer Screen, Reminder about Restarting



14. The installer runs and puts all the necessary lo XT drivers and software on the desired hard drive. When it has completed installation, a final screen will be displayed announcing that “software was successfully installed.”

Figure 13. Installation Success and Restart Message



15. Click the Restart button to complete the installation procedure. The system will perform software restart.

16. After installing the Io XT system driver package, install the AJA Control Panel package in the same fashion, following each screen and continuing to the next until installation completes.
17. Finally, install any AJA plug-ins required for 3rd-party software. You can download these from the AJA website:
<http://www.aja.com/en/products/io-xt/#support>
18. For example, if you wish to use the Io XT with Adobe Premiere or Adobe After Effects, you would go the AJA website Io XT support page (URL above) and download the “AJA Adobe Plug-ins for Creative Cloud”. These plug-ins come with complete documentation on how to use them.

Windows Software Installation

Locate the AJA Windows Software download file and follow the procedure below to install the required software on the host system.

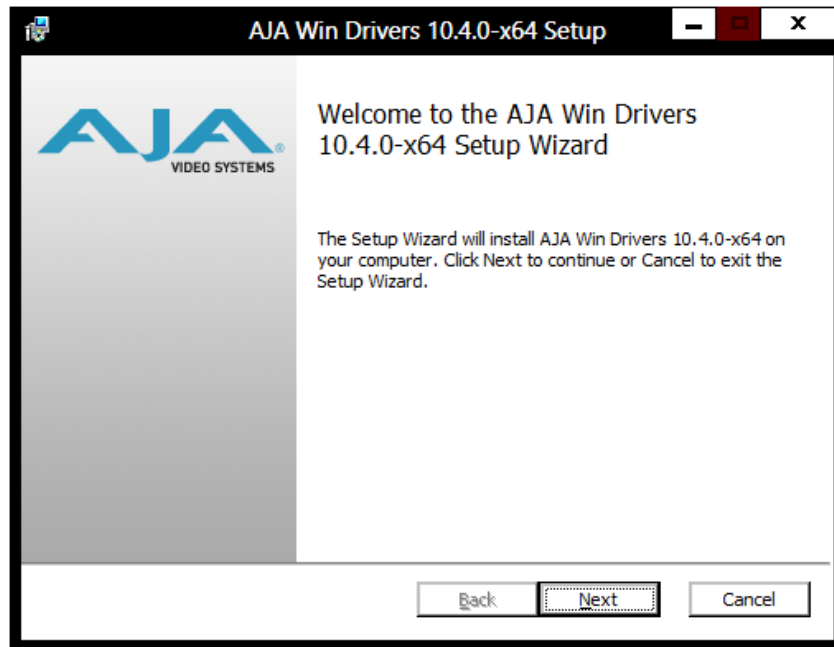
NOTE: If you have trouble installing AJA Windows Software, turn off any virus protection and security software that you have installed on your computer and try again.

Open the AJA Windows Software download package.

Install Wizard The AJA Windows Software installation program will launch and extract the necessary Io XT drivers, AJA Control Panel Software, for installation on the desired hard drive.

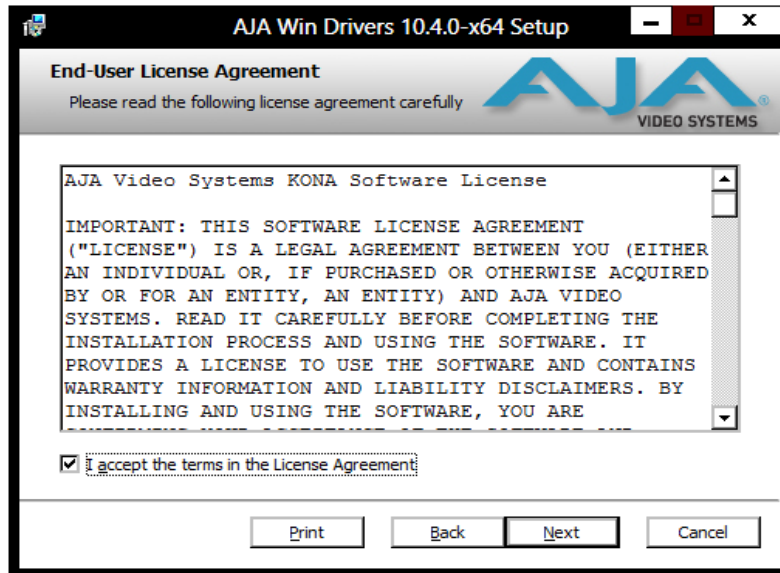
NOTE: The Windows installation requires separate download and installation of application plugins for AVID, Adobe, Eyeon Fusion, and Telestream Wirecast plugins. (See the web-link above.)

Figure 14. Install Wizard Welcome



When you see the Welcome page, click “Next” to view the AJA Windows Software license agreement.

Figure 15. License Agreement



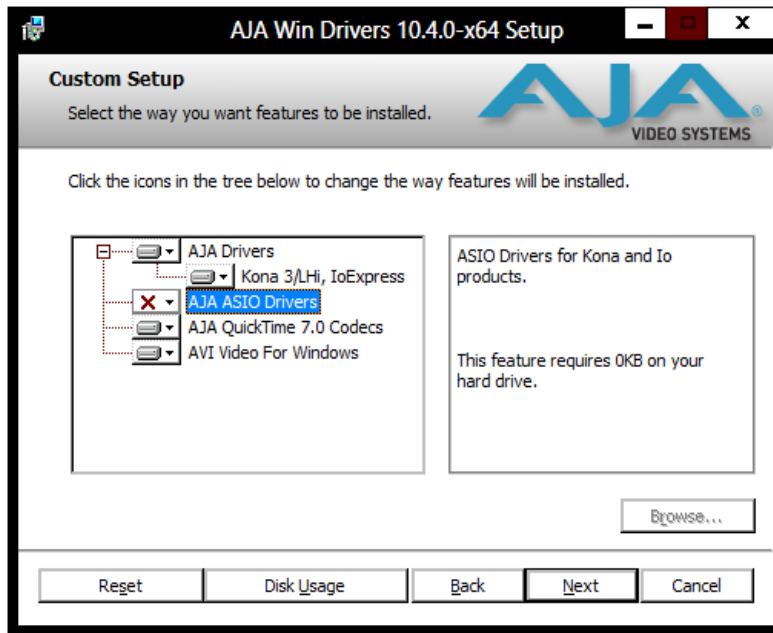
Read the Windows Software license agreement and click “Yes” to accept. You will be asked to choose the type of installation you would like to perform. Click on the Custom button to see the installation options.

The default selections include AJA Drivers for KONA cards, Io Express/XT, and T-TAP. Software not installed is marked with a red X.

You may choose to perform a Custom installation to select the specific software necessary for your applications. If you use the entire collection, use the “Complete” installation.

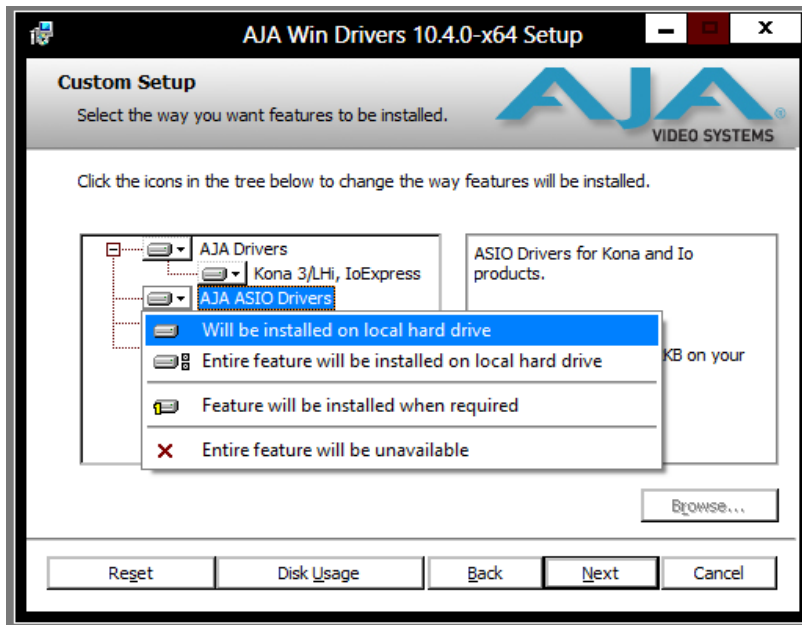
NOTE: By default, AJA ASIO drivers are not installed. (If you will be using the Voice-over feature in Adobe Premiere Pro, you will need to click on the pulldown menu and include them in the installation. For more information on using ASIO drivers, refer to the AJA Adobe Plugins Installation and Operation Guide.

Figure 16. Custom Installation Window



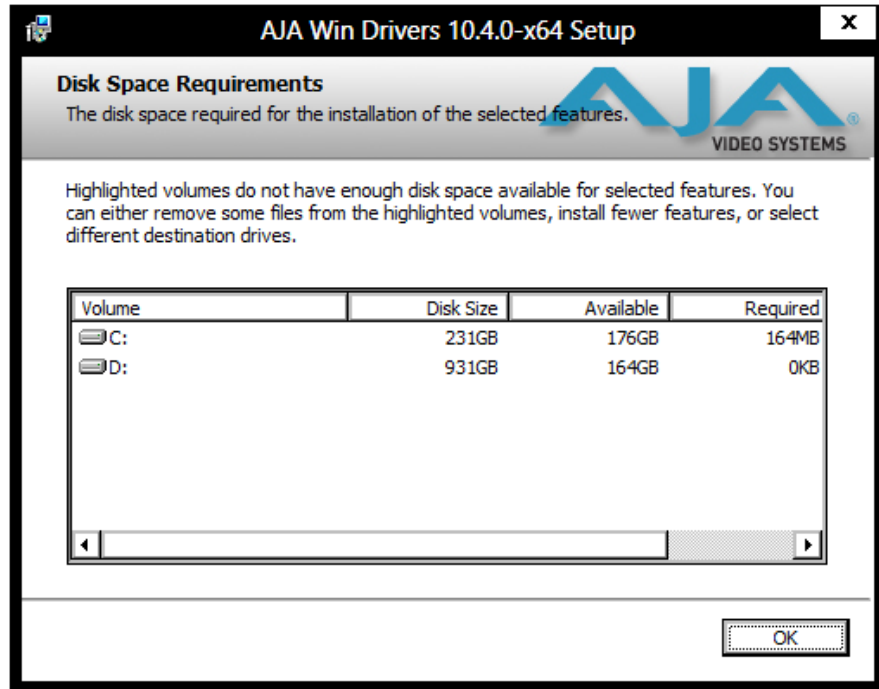
The following screens depict the more elaborate Custom installation. Shown below are the pull-down options. Click (triangle) to expand or contract.

Figure 17. Installation Item Selection



You may deselect any Item for installation by using the pull-down to make it unavailable. Before clicking Next to install, you can verify your disk space availability by clicking the Disk Usage button.

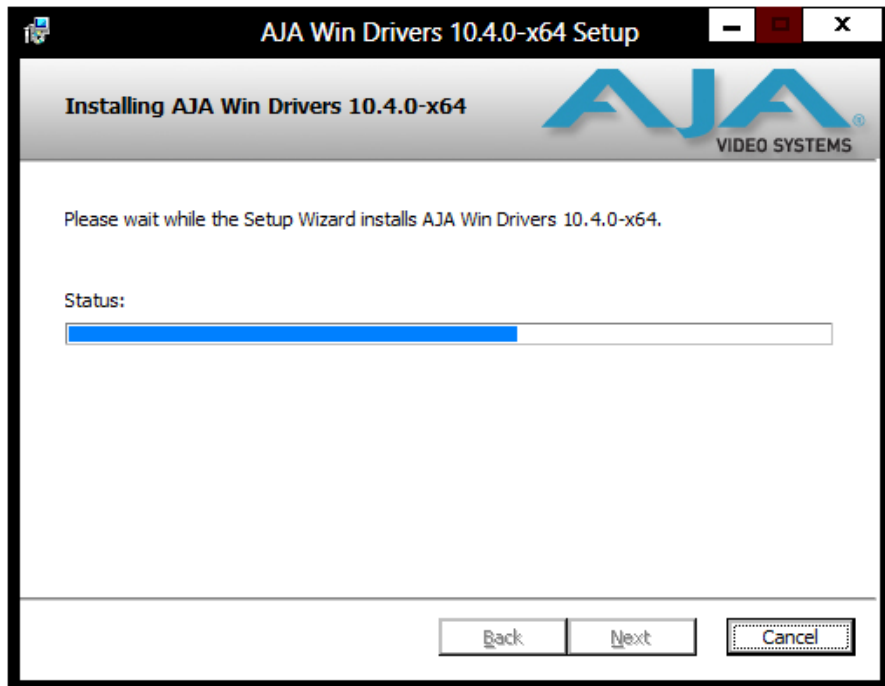
Figure 18. Workstation Disk Usage Display



To return to the installation click OK.

Click Next to begin the installation.

Figure 19. Installation Progress Screen



When the installer has completed copying the AJA Windows Software to disk, you will see a standard Windows Logo test warning. Click on the “Continue Anyway” button to finish the installation.

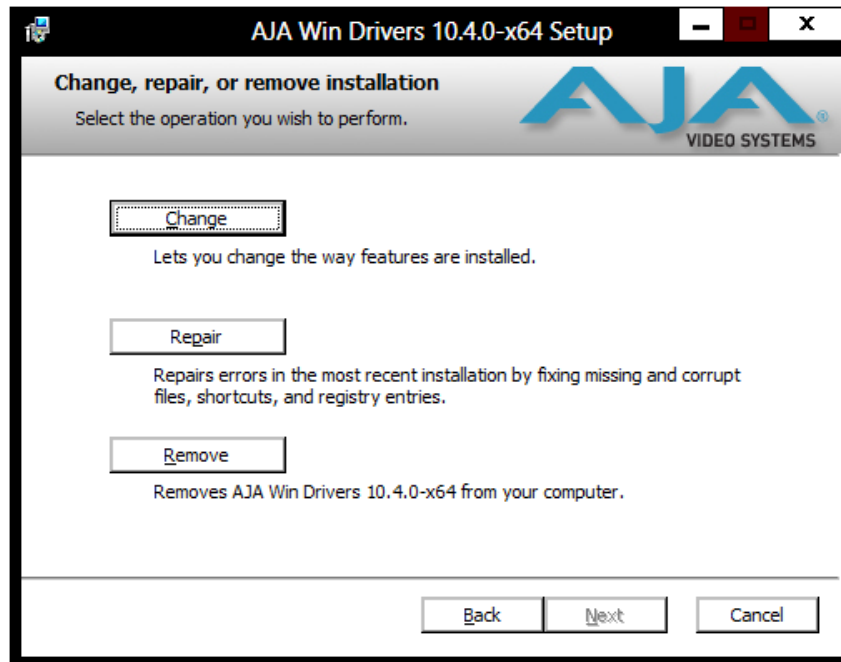
When the installation is completed, a final screen will be displayed announcing that “Setup has finished installing AJA Windows Software on your computer.” Click on the Finish button after the installation is complete. Restart the computer after installation to activate the Io XT.

Re-Installation & Repair

If you have problems running your newly installed plugins or need to re-install for added applications, you can relaunch the install package and access the following window.

NOTE: Always uninstall AJA Windows Software before installing a new version.

Figure 20. Change, Repair, or Remove Installation Menu



Genlock and Your System

For video stability and proper system operation, you can genlock all equipment to house sync, however genlock is not required for Io XT due to excellent freerun accuracy. To connect genlock, use a black burst generator output looped through the system. On the Io XT house sync is connected to “LTC/Ref In”.

NOTE: Be sure to set the Reference/LTC connection to Reference in the AJA Control Panel.

Chapter 3: Operation



Using io XT with Professional Video /Audio Software

After you install the io XT software and any AJA plug-ins to support your choice of 3rd-party software, you're then ready to begin capturing and playing back video and audio.

Go here to look for AJA plug-ins and documentation for your favorite 3rd-party software applications:

<http://www.aja.com/en/products/io-xt/#support>

For further support information and downloads for third-party software and DirectShow for Developers, go to this link:

<http://www.aja.com/en/support/resources/>

Once you've installed all the AJA software as detailed in Chapter 2, you'll find the AJA Control Panel application in your Applications.

AJA Control Panel Overview

The AJA io XT Control Panel is a software application that provides a simple visual window showing how the io XT interface is currently configured, and that allows you to make changes. Settings—both those you changed and those you didn't—can be saved as a snapshot for recall at anytime. This lets you save settings associated with all your frequent tasks; then as you switch tasks you don't have to spend extra time resetting interface configurations—just load the previously saved settings for each task.

One thing you'll notice instantly about the Control Panel is that it represents a visual block diagram of how the unit is configured. The current status, input and output settings, and many other details can be viewed as a color-coded block diagram in the Control Panel.

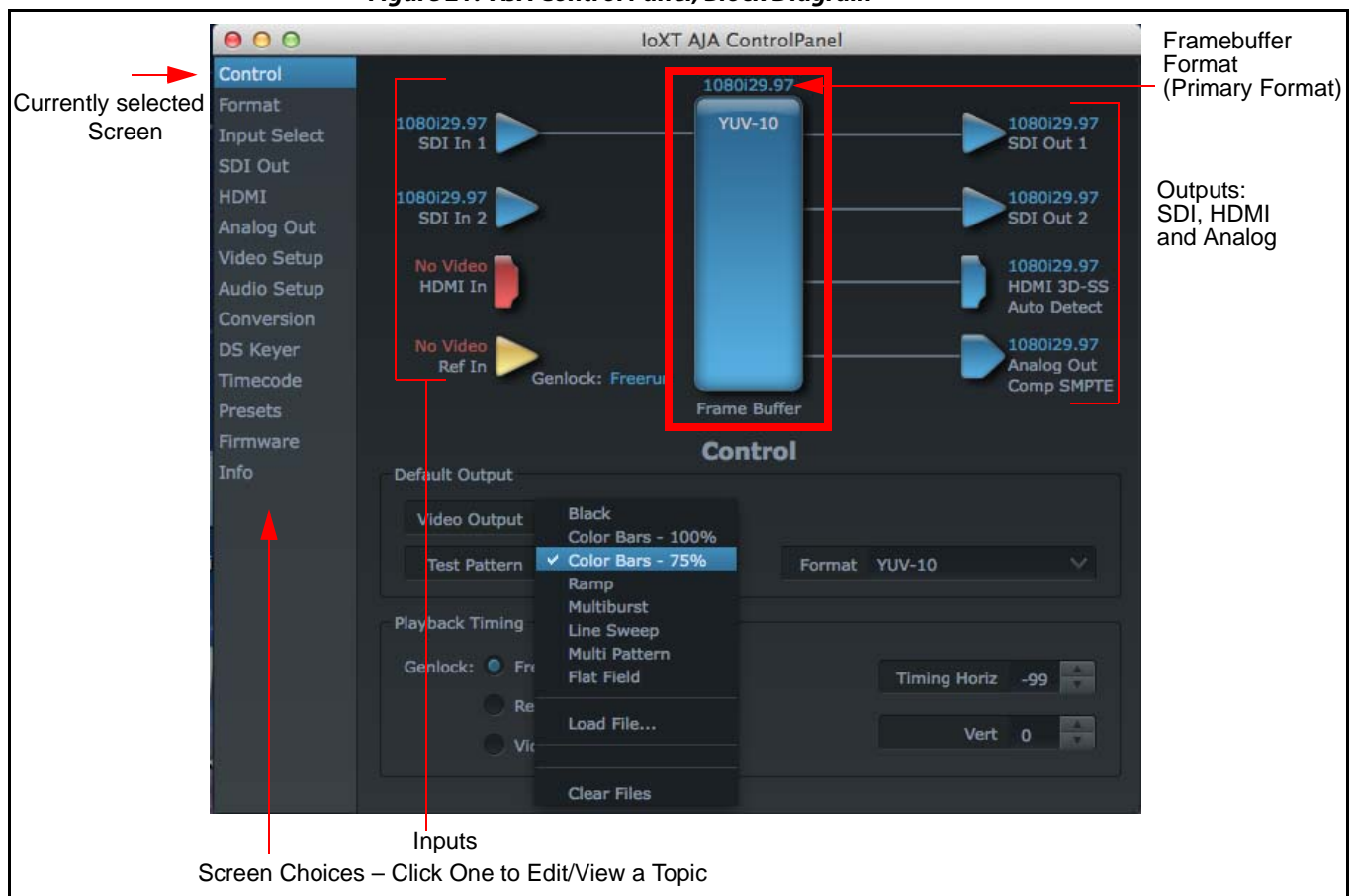
To ensure you make the most of the software, launch the AJA/lo XT Control Panel application and look at its display. Then refer to the “Basics” described here to fully understand what you’re seeing and learn how to view and change the lo XT system configuration.

Block Diagram Screen

The top area of the Control Panel shows a visual picture representing the processing (if any) that’s currently occurring, including inputs/outputs, reference source, and system status. Lines between inputs, the framebuffer, and outputs, show a video path. Where there are no lines, it shows there is no connection; this can be because an input or output isn’t selected. The lines will also show whether the outputs are video or video + key.

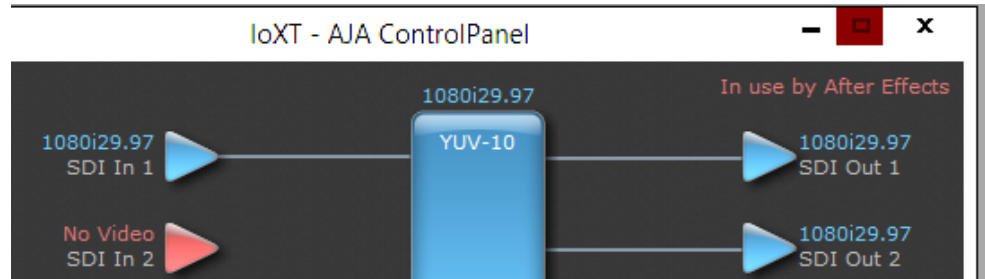
Icon objects on the block diagram screen (input/output icons, frame buffer, etc.—also called “widgets”—indicate their status by color (explained later) and can be clicked for context-sensitive information and choices. (These same choices can also be made from the linked Control Panel screens.)

Figure 21. AJA Control Panel, Block Diagram



Framebuffer: The framebuffer is the “memory” in lo XT where your third-party applications interface with the hardware. The framebuffer has a format (called the “Primary Format” and color space that it follows, as defined in the linked menu screens or via external application software. It is important to realize that the computer can contain many applications that can use the lo XT (as you switch from window to window) and it may not always be obvious which currently controls it.

Figure 22. Control Panel In Use Message



In the top right corner, the Control Panel displays the name of the application controlling the lo XT. In some cases, applications may not always properly “let go” of the I/O interface as another takes over—you’ll be able to tell by looking at the Control Panel.

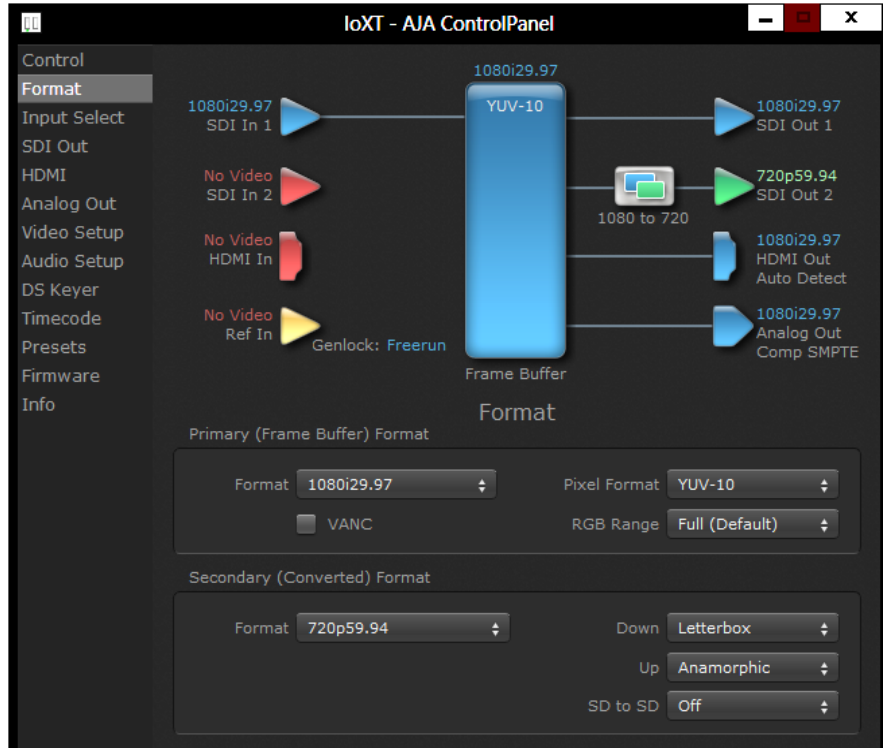
Color Meanings: All items in the lo XT Control Panel block diagram are color-coded to show what is happening in realtime. This applies to both icons and text. These colors have the following corresponding meanings:

- **Blue:** video is same format as the Primary Format (framebuffer)
- **Red:** the selected operation cannot be performed
- **Yellow:** reference video (black burst or other reference source)
- **Green:** indicates that lo XT is performing an active change to the video making it different from the Primary Format (e.g., down-conversion).

Primary Format: The video format currently assigned to lo XT. This is the format that the framebuffer will use and is shown in the Control Panel using the color blue. It is the format that the third-party application software will either receive from the AJA hardware, or is giving to the hardware. All icons in blue are the same as the Primary Format used by the framebuffer. Also any text descriptions in the block diagram that appear in blue also indicate that something is in the primary format. So, for example, if you see that the input and output icons are blue, then you know that the same format is used throughout the video path and that no format conversion is being performed. If a different color is displayed on the input or output, say green for example, then you know that lo XT is performing a format conversion in the video path.

Secondary Format: Any format other than the currently selected Primary Format, is a secondary format. As described previously, this means that either the Inputs or Outputs are somehow different from the framebuffer's assigned format (i.e., the "Primary Format"). This can be seen at a glance because the color will be different from blue. In the example below, a secondary format of 720p59.94 is selected on the Format screen and is then used for output at SDI 2.

Figure 23. Setting the Secondary Input Format



Input/Output Icons: The input and output icons are triangles that together with their color show all the input and outputs and their status (selected, not selected, input present or not, format, etc.). A complete video path is shown when inputs and outputs are connected with lines going to/from the framebuffer.

Figure 24. Input/Output Icon



Conversion Icons: When an input or output is a different standard than the framebuffer, the lo XT may be up- down- or cross-converting the signal to the selected standard. This may be automatic, because it's detected an input signal that differs from the standard currently selected, or because you've explicitly told it to convert. In either case, the block diagram will show the conversion by displaying a conversion icon in between the input/output and the framebuffer.

Figure 25. Up, Down, and Cross-convert Icons



Control Panel Screens: The side area of the Io XT Control Panel provides different information categorized by topics. Clicking on a topic—or a block diagram element—displays an information screen corresponding to that topic. Screens that can be selected are:

Control: configures Io XT operation and output timing.

Format: select the framebuffer primary video format and any secondary formats for conversion of inputs/outputs

Input Select: view and edit input selections and how they are mapped

SDI Out: select output format

HDMI: configure the HDMI I/O

Analog Out: configure the component/composite analog output

Video Setup: configures Video such as composite black level.

Audio Setup: configures Audio options such as analog audio monitor level.

Conversion: (available for Mac only) for applications that support selection of codec options such as whether paused video appears as a full frame or a single field (jitter shown or not shown) and 24 to 30 fps padding patterns, RGB range, and Stereo 3D signal configuration (if applicable).

DS Keyer: setup and control the insertion of keyed video from the frame buffer or graphics files with alpha channel.

Presets: add or delete saved preset configurations (handy for setting up the Io XT for certain workflows and then saving it as a canned configuration for easy later recall)

Firmware: enables installation of AJA card firmware.

Info: displays status information and firmware version # of the Io XT and how it is installed in the host Macintosh. This information is generally intended for troubleshooting/support.

Control Panel Operation

Control Screen

The lo XT can be controlled by various software applications running on a host Mac. The Control screen is where you select how the lo XT directs video and is used by application software. This screen also provides control for configuring output timing with regard to external reference video and horizontal/vertical delay.

At the top of the Control screen it will show the current Default Output and the application currently controlling the lo XT.

Figure 26. AJA Control Panel, Control Screen



Control Screen Settings

Default Output—this is where you select what lo XT will output as a default when no application has control of the board, such as when the Finder is active. Since lo XT can be controlled by software applications as well as its own control panel, the output can change dynamically. When you select many video applications, they will grab control of the lo XT inputs/outputs. These settings determine what happens when an application that doesn't grab the lo XT inputs/outputs is active.

Default Output Choices and their meanings:

- **Black:** this selection directs lo XT to output video black whenever an application isn't controlling the card.
- **Input Pass through:** this selection directs lo XT to route video from its selected input through the card for processing and output. When this selection is in effect, all Primary/Secondary Format selections are available for selection in controlling the output. This in effect makes the lo XT a converter when used in conjunction with the AJA Control Panel application and a Mac. No applications other than the

AJA Control Panel need to be open to convert audio and video from one format to another. For example, if an SD source tape needs to be dubbed to an HD tape, the signal might be routed from the SD VTR to the lo XT, configured for up-conversion in the AJA Control Panel and then passed through to the HD VTR for recording.

- **Test Pattern:** this selection directs lo XT to output a choice of preset pattern when no other application is using the lo XT. You can choose from:

Black, Color bars (75% or 100%), Ramp, Multiburst, Line Sweep, Multi Pattern, or Flat Field.

In addition to the preset test pattern choices, a "Load File..." selection at the bottom of the menu allows you to load any standard RGB graphics file (.tif,.psd, etc.) into the frame buffer for display.

While in Test Pattern mode, you can select RGB or YUV output via a pulldown menu.

NOTE: The graphic file will not be scaled to fit. If it's smaller than the current frame buffer format, lo XT will center it in the frame. If it's larger than the current frame buffer format, it will be cropped on the right and bottom. Also some graphics formats and bit depths may not be supported. Once a graphic file is loaded into the frame buffer it will be retained until it is overwritten by another graphic or test pattern, or when power is turned off. Graphic file names are only "remembered" in the menu as long as the AJA Control Panel application is running.

Hold Last Application: this selection directs lo XT to hold and output the last frame of video from the last application to control lo XT. This can be helpful when operating in an environment where you're switching back and forth between multiple application windows.

Playback Timing: Use these controls to set Genlock and Timing adjustment.

Genlock (*Freerun, Ref In, Video In*)—selects how lo XT will synchronize program video:

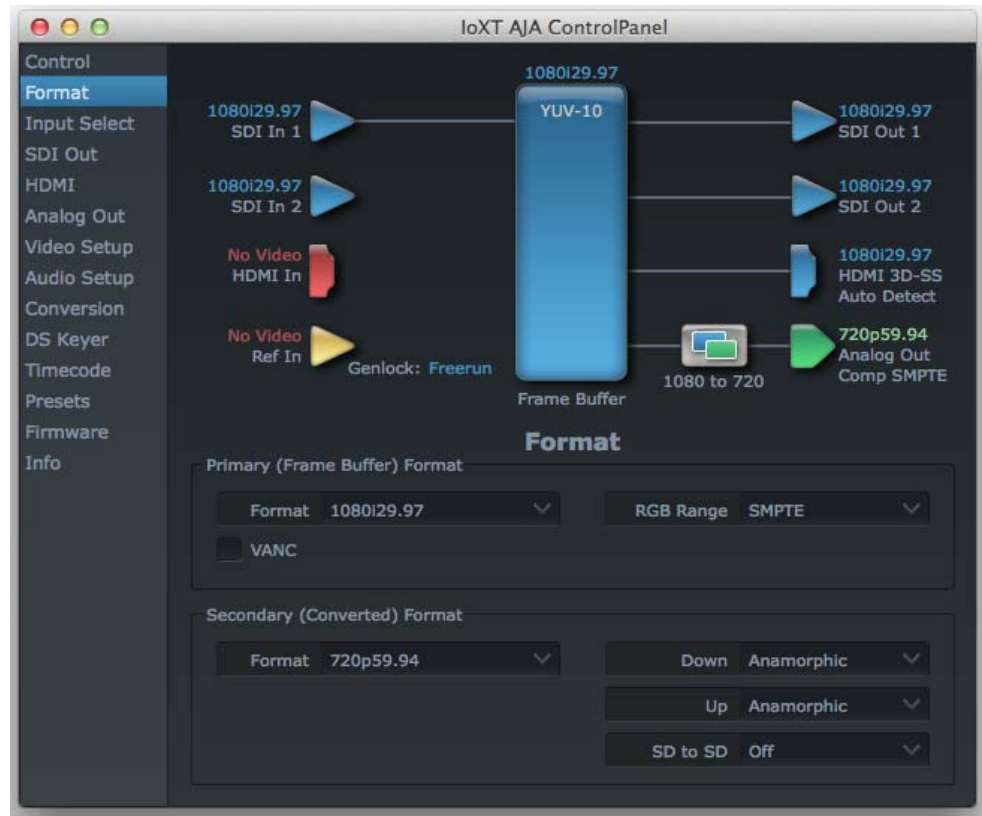
- **Freerun:** In this mode, lo XT generates sync without an external reference source
- **Ref In:** Directs lo XT to use the Ref Video source for sync (usually an analog black burst video signal)
- **Video In:** Directs lo XT to use whichever video input source has been selected in the Inputs screen for sync

Timing (*Horiz and Vert*)—these two pull-downs allow output timing adjustment with reference to the Ref Video source selected. The Horizontal reference can be adjusted by selecting a number of pixels (clocks) to offset. Vertical can be adjusted by specifying a number of lines to offset.

Format Screen

The Formats screen shows the video format currently in use by the lo XT framebuffer (called the *Primary Format*) and allows you to change it. All throughout the Control Panel, choices are always presented based on what lo XT can do with the signals available and the inputs/outputs selected. For example, on the Format screen, if the output or inputs are a different format than the primary, then you'll see an additional information pane that allows you to view and edit the secondary format—including control over whether up/down/cross conversion is employed.

Figure 27. AJA Control Panel, Formats Screen



Format Screen Settings

Video Format (Primary and Secondary):

These pull-down menus show the currently selected formats. If you select an alternate value in the Primary Format using the pull-down, it will change the format used by lo XT's framebuffer. When a change is made via the Video Format pull-down or by clicking an icon (widget) and selecting a new format via a contextual menu, the block diagram will change to reflect the new format. In the case of a Secondary Format, the formats available can vary based on what the Primary Format is and the input signal (frame rates of input sources limits the to/from conversion choices). The "Secondary Video Format" pull-down menu lists all compatible formats for selection (incompatible formats are not shown). This allows you to see what you've chosen, and also see those formats that are compatible with the selected Primary format.

For a complete list of lo XT Formats see Specifications, "[Video Formats](#)" on page 52.

NOTE: *The AJA Control Panel software uses the abbreviation "sf" instead of "psf" when referring to "progressive segmented frame" formats. In the manual and in other literature you may see either of these acronyms used interchangeably. Visually it is easier to discern at a glance if you*

are working with progressively segmented frame formats (sf in the AJA Control Panel) as compared to progressive frame formats which will show only "p."

RGB Range: The *RGB Range* pulldown menu allows you to select either Full range (0-1023) or SMPTE range (typically 64-940) for RGB color output.

VANC Checkbox: When checked ON, the VANC checkbox tells the lo XT to capture and process any ancillary data in the SDI stream. This can include Closed Captioning data, and other types of metadata. Applications such as Premiere Pro and Final Cut Pro will not capture or output this data through the lo XT, if this box is not checked on.

Cross-conversion: If you have an HD format as your primary and then select a secondary HD format with a different frame size, the lo XT will perform a cross-conversion where necessary (input or output) for "like Hz" formats. "Like Hz" means that 720P 59.94 may be converted to 1080i 29.97 (59.94Hz). Converting from disparate Hz is not supported on the lo XT for cross-conversions. The example below shows 1080i to 720p.

Up (Conversion): The *Up* and *Down* pull-down menus are available when conversion has been selected for the video path to/from the framebuffer and like Hz formats are selected (the one exception is 1080PsF 23.98 which can be down-converted to 525i 29.97.) Different choices will be available depending on the type of conversion and formats being converted. SD to SD conversions are essentially aspect ratio conversions to accommodate transforming anamorphic images to letterbox or vice versa.

For up-conversion the following choices are available:

Anamorphic: full-screen "stretched" image

Pillar box 4:3: results in a 4:3 image in center of screen with black sidebars

Zoom 14:9: results in a 4:3 image zoomed slightly to fill a 14:9 image with black sidebars

Zoom Letterbox: results in image zoomed to fill full screen

Zoom Wide: results in a combination of zoom and horizontal stretch to fill a 16:9 screen; this setting can introduce a small aspect ratio change

Down (Conversion): For down-conversion the following choices are available:

Letterbox: image is reduced with black top and bottom added to image area with the aspect ratio preserved

Crop: image is cropped to fit new screen size

Anamorphic: full-screen "stretched" image

SD to SD: This pulldown is for SD to SD aspect ratio conversion.

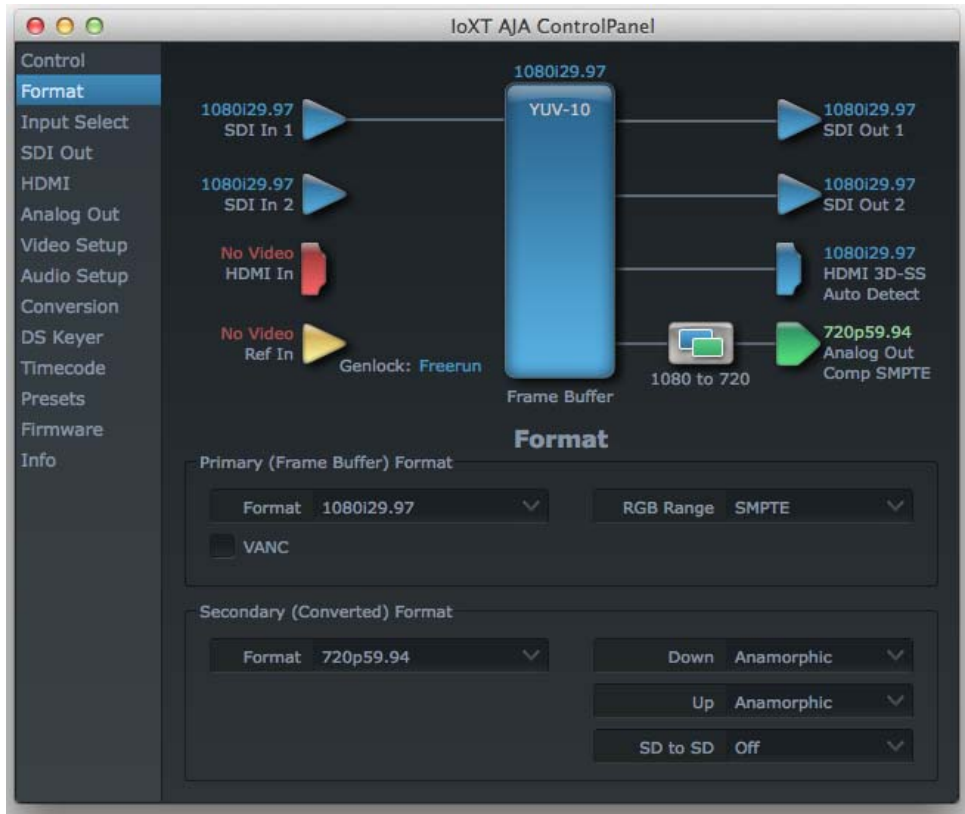
Letterbox: this transforms SD anamorphic material to a letterboxed image.

H Crop: will produce a horizontally stretched effect on the image; transforms anamorphic SD to full frame SD

Pillarbox: will produce an image in the center of the screen with black borders on the left and right sides and an anamorphized image in the center

V Crop: will transform SD letterbox material to an anamorphic image

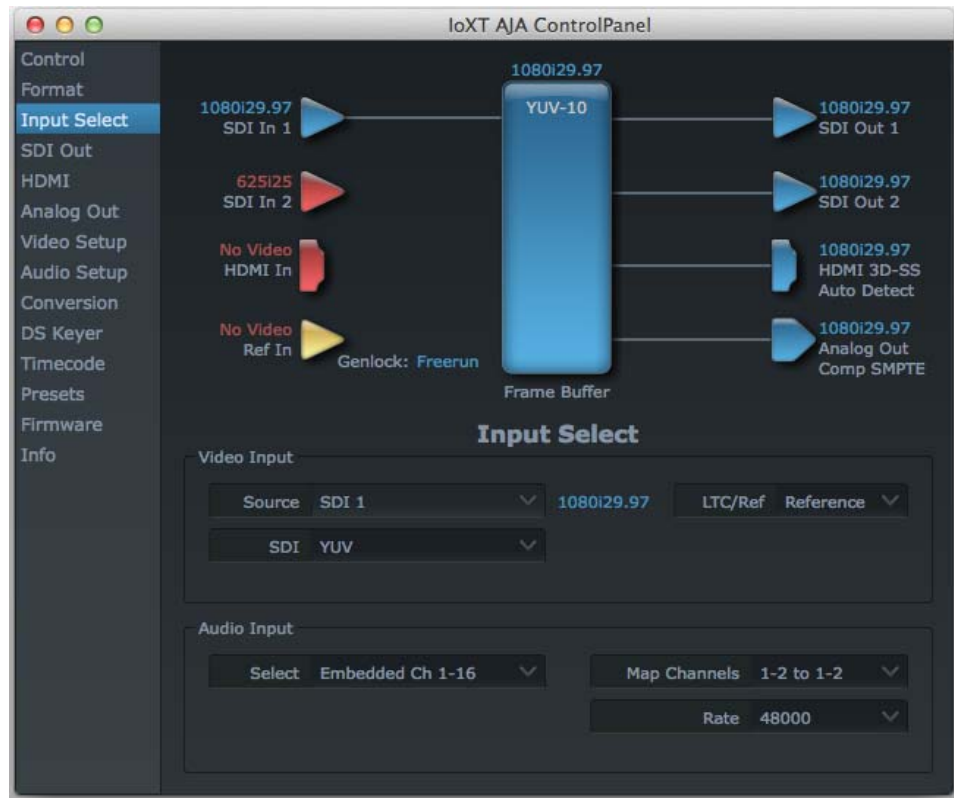
Figure 28. AJA Control Panel, Formats Screen, Example shows cross-conversion



Input Select Screen

On the Inputs screen you can view the currently selected video and audio input sources and map audio sources to the channels supported by your editing application. Two information panes in the screen are provided: Video Input and Audio Input.

Figure 29. AJA Control Panel, Inputs Screen



Input Select Settings

Video Input: The pulldown menu allows you to see and change what's currently selected and the video format that lo XT has detected (if any). In the example shown previously, it shows that video is selected at the HDMI input and the format is 1080i with a frame rate of 29.97. Since this text is shown in blue, you can tell that it matches the framebuffer's primary format selected in the "Formats" screen. By looking at the input source, you can determine how the primary format should likely be set (unless you want to perform a conversion on input.) If you wish to select a different input use the pulldown to select either SDI 1, 2 or Dual Link for two-wire 4:4:4 RGB, or Stereo 3D. For 3G single-link, choose the SDI Source used and select Stereo 3D from the SDI pulldown menu.

Use the LTC/Ref menu pulldown next to Video Input to select how the LTC BNC is used: selecting Reference means it's used a Reference standard; selecting LTC means it's used for linear time code (LTC) input.

Audio Input: This pulldown menu allows you to pick where the audio comes from. lo XT supports up to 16 channels of embedded audio. Here you can also select which two channels from the 16 embedded would be mapped to your editing application if only two channels were selected in that application.

SDI Output Screen

The SDI Output screen shows the current settings for both of the SDI outputs. Because the outputs can be configured independently, one output may be the Primary format and the other output may be the Secondary format. If an input/output has no video, it will be indicated on the block diagram (“No Video”).

3D Stereoscopic Workflow

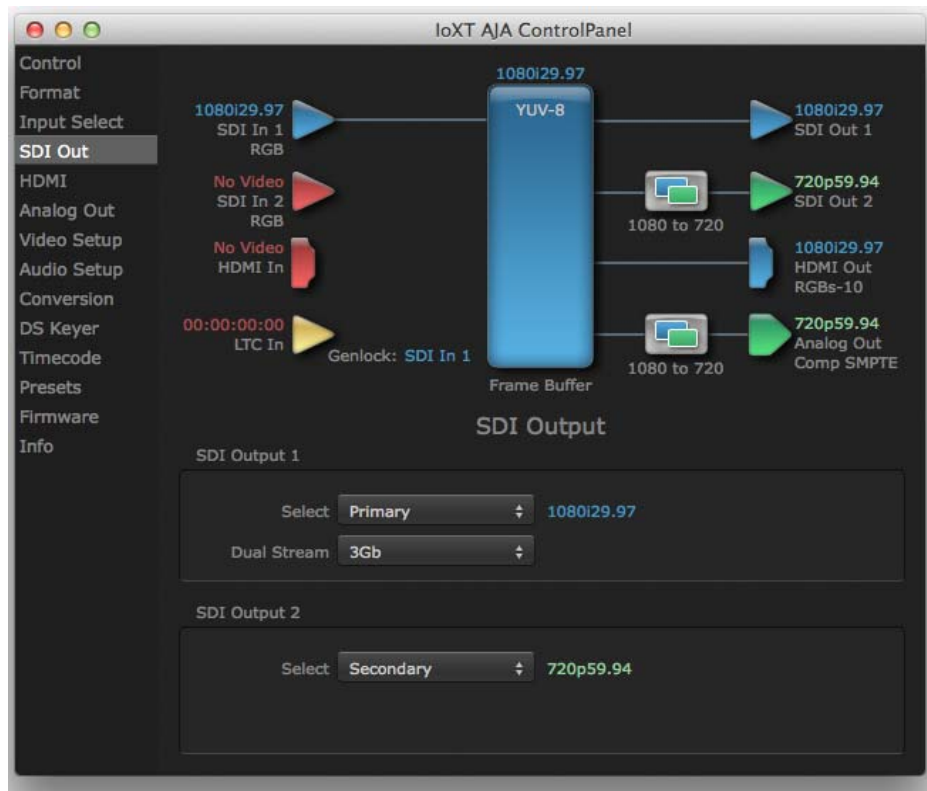
Through SDI, you can output Discrete Left and Right Eye feeds with a simple Stereo button choice in the AJA Control Panel. Additionally, muxed stereo output is possible using a single SDI output. AJA hardware and software works in close collaboration with CineForm's Neo3D software tools and CineForm codec to allow stereoscopic editorial and viewing when working with professional quality video editing applications.

NOTE: This feature works within applications that support the CineForm video delivery method.

SDI Output 1 and 2

Configure SDI Out 1 and 2 via pull-downs:

Figure 30. AJA Control Panel, SDI Output Screen



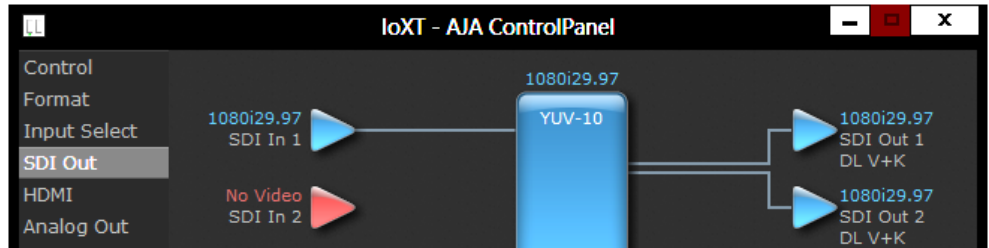
SDI Output Options

Primary: When selected, this indicates that the SDI output is set to the same format as the framebuffer. That value will be listed in blue.

Secondary: When selected, this indicates that the SDI output is set to a format different from the framebuffer (Primary Format). That secondary format value will be listed in green. This shows that active processing of the video is taking place (format change and possibly even up/down-conversion).

Video+Key: When selected, this indicates that the SDI 1 Output video is set to the same format as the framebuffer. SDI 2 Output is set to a video key signal associated with SDI 1 (the shape to be cut out from the video - this will appear as a black and white image/matte). Using the second lo XT output as an Alpha Channel key, with the video output, may be useful for feeding production switchers, DVEs or other professional video equipment.

Figure 31. SDI Outputs Set for Video +Key



Stereo: When selected, this indicates that SDI 1 represents the left eye output and SDI 2 represents the right eye output of stereoscopic material. lo XT also offers single link 3Gb output of multiplexed Stereo 3D.

Dual Stream Options

Dual Link: Output (SMPTE 372M) using SDI 1 and SDI 1 in concert.

3Gb: Output (SMPTE 424M) using a single-link transport.

RGB SMPTE: When selected, sets the output to RGB SMPTE range video for the SDI output.

RGB Full: When selected, sets the output to RGB full range video for the SDI output.

HDMI Screen

The lo XT's HDMI input and output are shown and configured at this screen.

Figure 32. AJA lo XT HDMI, HDMI Screen



HDMI Output Settings The Source pulldown menu allows you to select either the primary video format (framebuffer) or a secondary one (up/down/cross-conversion).

Pulldowns are also provided for configuring the video output range, color space and number of embedded audio channels (2 or 8) for the HDMI output. A Protocol pulldown allows you to choose either “HDMI” or “DVI” protocol—use DVI if you’re outputting to a DVI monitor using an HDMI to DVI adapter.

A pulldown menu for 3D output allows you to select either Side-by-Side or Top-Bottom (Stacked) output of left-eye and right-eye signals.

NOTE: This selection must agree with format selection in the third-party CineForm Codec (**NOT** included with AJA lo XT) pulldown menu.

Audio Channels: An Audio Channel pulldown allows you to select the number of embedded audio channels for the HDMI output.

HDMI Input Settings The detected HDMI input video format is displayed and you’re given a chance to configure the RGB range (SMPTE or FULL) and select any two embedded channel pairs from those supplied for stereo output (if applicable).

Analog Out Screen

Io XT provides a high-quality analog component or composite + Y/C output, generally used for monitoring. This screen shows the current settings for that analog output, and allows you to re-configure it when desired (format and black-level).

Figure 33. AJA Control Panel, Analog Out Screen



Analog Out Screen Settings

Analog Output: Select Primary or Secondary (any conversion applied) for the analog output; if a conversion is applied, you'll see the conversion icon appear on the block diagram. Next, select the video format from the *Format* pulldown.

Analog formats can be:

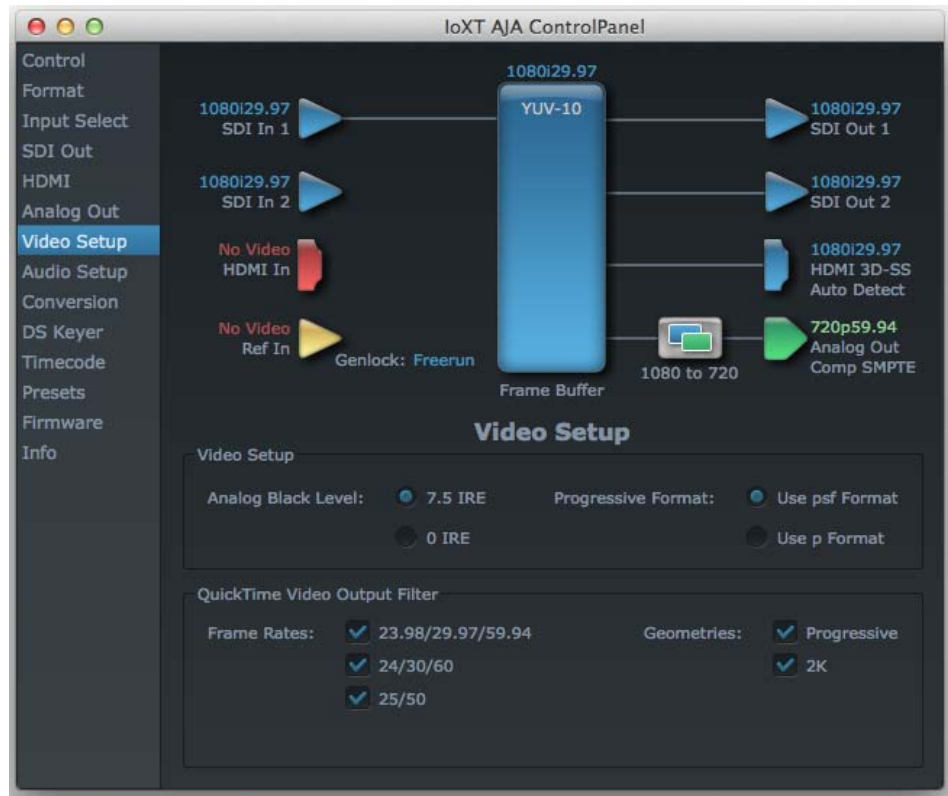
- Composite +Y/C (one composite output *and* a simultaneous Y/C [S-Video] output)
- Component (SMPTE/EBU N10)
- Component (Beta)
- Component (RGB)

Audio Monitor: Here you select which two channels will be mapped to the analog audio stereo output (headphone jack).

Video Setup Screen

Io XT provides a high-quality analog component or composite output, generally used for monitoring. This screen shows the current settings for that analog video output, and allows you to re-configure it when desired.

Figure 34. AJA Control Panel, Video Setup Screen



Setup Screen Settings

Analog Black Level: Choices available for Black Level are the two Composite analog formats. Choices presented are for US or Japan:

- 7.5 IRE (NTSC US)
- 0 IRE (NTSC Japan)

QuickTime Video Output Filter: The QuickTime Video Output Display Filter is designed to help manage the comprehensive list of video outputs that may be available to applications.

By selecting the checkbox next to specified parameters, the video outputs related to these specified parameters are enabled as possible video outputs for applications. For example, if the checkbox next to 25/50 is unchecked, 50Hz video outputs are deselected and would not be available to the user's editing application. To avoid confusion when working in a particular editorial environment, you might choose to leave 50Hz unchecked if working solely in a 60Hz editorial environment. The same might be true if you do not intend to work with true progressive 1080 material.

Audio Setup Screen

This screen shows the current settings for the analog audio output, allowing you to re-configure it when desired.

Figure 35. AJA Control Panel, Audio Setup Screen



Audio Setup Screen Settings

Lock Audio Gain To Unity: When set, the lo XT will ignore the third-party application's gain setting and set the audio gain at unity. When not set, this checkbox tells the lo XT to get the audio gain setting from the editing application (if supported).

Analog Audio Monitor Level: This selection determines the audio level that will appear at the analog audio outputs ("FSD" is full-scale-deflection reading as measured on a VU meter). Select +18 for Europe or +24 for USA.

Conversion Screen (Mac OS only)

This screen offers controls that determine how the card behaves with 3rd-party applications.

NOTE: This screen is present in the Mac version of AJA Control Panel only and not all applications support these functions.

Figure 36. AJA Control Panel, Conversion Screen



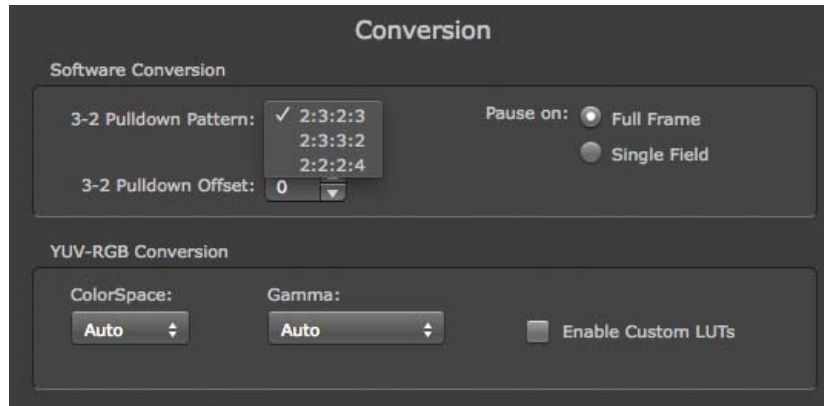
Pause On: These two choices determine what happens when the editing application is paused in stop mode:

Full Frame: both fields are displayed resulting in some jitter while paused.

Single Field: a single field is displayed, showing no flicker (useful when color correcting or whenever the flickering would be a distraction).

Software Conversion: The value selected in this pulldown is used whenever, due to format selection, you've chosen to do 24 frames-per-second to 30 conversion where extra fields will be added to pad the existing ones. Depending on video content, selection of different field patterns may be useful in reducing jitter due to the content of adjacent fields. The numbers in the pattern choices specify the frequency with which inserted fields will be repeated. For example, "2:3:2:3" means duplicate a field twice, then the next field three times, then the next twice, and then back to three times.

Figure 37. Conversion Screen Frame-padding Pattern Choices



YUV-RGB Conversion These pulldowns select industry standard color space and gamma transfer functions for the YUV-RGB conversion, or allow you to direct lo XT to automatically determine it for you.

Colorspace: Choose from:

- Rec 601
- Rec 709
- Auto

Gamma: Choose from the following:

- Linear (1.8)
- Rec 601 (2.20)
- Rec 709 (2.22)
- Auto

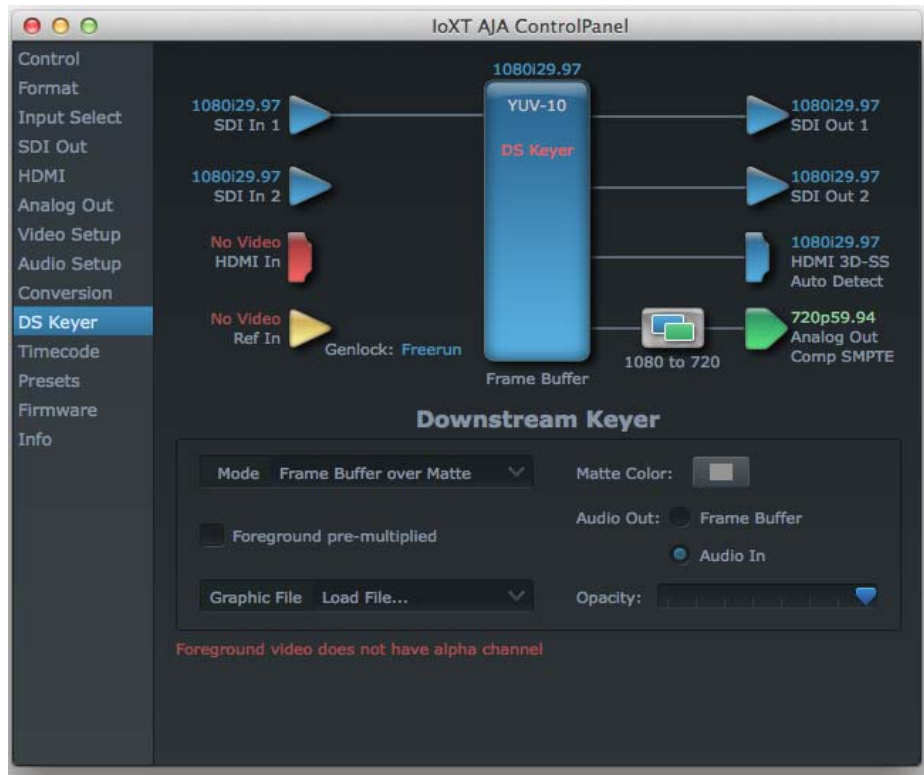
RGB Range: The RGB Range pulldown menu allows you to select either Full range (0-1023) or SMPTE range (typically 64-940) for RGB color output.

Enable Custom LUTs: This checkbox enables a custom color lookup table (LUT).

DS Keyer Screen

The lo XT has a hardware-based downstream keyer that is ideal for putting logos, “bugs” or other video material with an alpha channel on top of video being played out or printed to tape. A typical application would be putting a television station's call letters or channel over program video content. Keyed video can be from the lo XT internal Frame Buffer (from storage, video In, etc.) or from a graphics file that has an alpha channel (PhotoShop etc.).

Figure 38. AJA Control Panel, Downstream Keyer Screen



Settings in the DS Keyer Screen provide control over how the keyer operates and whether it's turned on or off. Controls and their meanings in the screen are as follows:

Mode

- Downstream Keyer Off:* When this pulldown menu item is selected the downstream keyer will be turned off
- Frame Buffer over Matte:* Places the keyed video with alpha channel currently in the Frame Buffer over a fixed color matte determined by the “Matte Color” setting set separately.
- Frame Buffer over Video In:* Places the keyed video currently in the Frame Buffer over the video input for playout or print-to-tape.
- Graphic over Matte:* Places a graphics file having an alpha channel (chosen in “Graphic File” pulldown) over a fixed color matte determined by the “Matte Color” setting set separately.
- Graphic over Video In:* Places a graphics file having an alpha channel (chosen in “Graphic File” pulldown) over the video input for playout or print-to-tape.
- Graphic over Frame Buffer:* Places a graphics file having an alpha channel (chosen in “Graphic File” pulldown) over the current contents of the lo XT Frame Buffer (which might be from storage, video In, etc.).

Matte Color Only available when the pulldown “Frame Buffer over Matte” or “Graphic over Matte” are selected—pressing this button brings up a color selection dialog. The dialog provides a variety of ways to select a matte color including a color wheel, color picker (choose from a location anywhere on the computer screen), numeric sliders, swatches, “crayons”, and spectrums. The matte chosen will be used as a video background under the keyed video.

Foreground pre-multiplied (checkbox) Use to avoid “matte lines” and improve the appearance of the foreground (key) being composited over the background.

Audio Out

Frame Buffer: Select audio out to be routed from the Frame Buffer.

Audio In: Select audio out to be routed from the Io XT’s selected input(s).

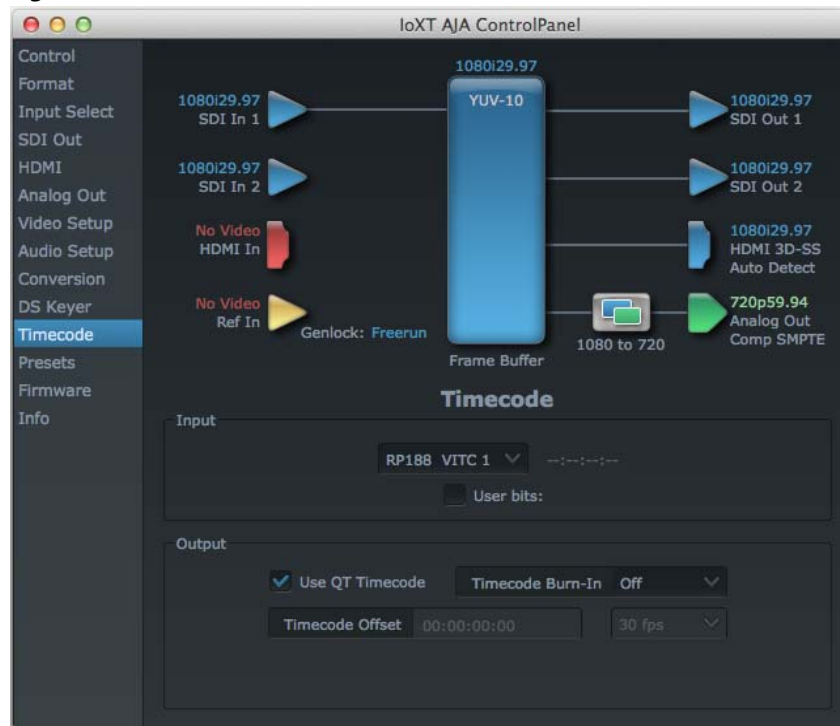
Graphic File This pulldown allows you to choose from any recently accessed file or select a new file (“Load File...”), which then brings up a file dialogue. Remember that the file raster (pixel x pixel count) should match the primary format in the frame buffer or the secondary format if up-converting. Example: you wish to key a logo on top of your 1920x1080 footage, the still image with alpha channel that you load should be 1920x1080.

Timecode Screen

The timecode is used for both monitoring the RP-188 timecode embedded in the digital data stream and for selecting a timecode offset (if required) for the attached VTR (connected to the RS-422 port)—and sent during assemble-edit mode.

Note: SMPTE 12M-2 is the updated name and specification for what was RP-188.

Figure 39. AJA Control Panel, Timecode Screen

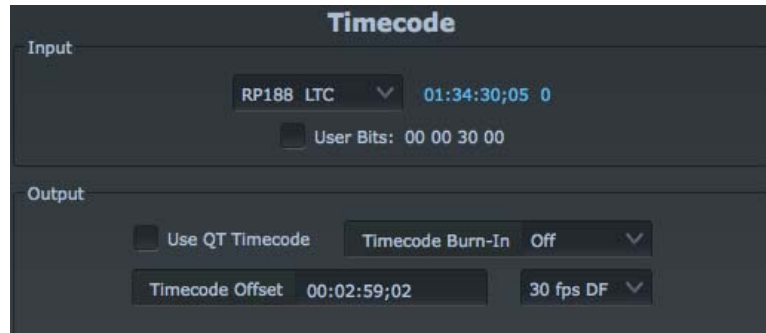


Timecode Input Settings

RP-188 Timecode <n>: In RP-188 timecode (SMPTE 12M-2) there can be multiple timecode values in the data stream. Use this pull-down to select the one you wish to monitor. The selection will be displayed in the timecode value displayed to the right of the pull-down.

User Bits: For monitoring variable framerate (VFR) timecode (such as Varicam), you may wish to monitor the user bits embedded in the timecode. If you set this checkbox, lo XT will detect and interpret the user bits and display them next to the checkbox.

Figure 40. AJA Control Panel, Timecode Screen



Timecode Output Settings

Use QuickTime Timecode (Mac OS Only): This feature is for Final Cut Pro, VTR Exchange, and AJA TV only. When checked, it directs lo XT to output timecode from the QuickTime timecode track. When not checked, lo XT uses the Output Timecode Offset value plus the number of frames into the movie.

Timecode Offset (entry field and FPS pull-down): This text entry field allows you to specify a timecode offset for use with your editing application that supports user-controlled timecode offsets. Use that same value here as the “Output Timecode Offset” to ensure the timecode is synchronized.

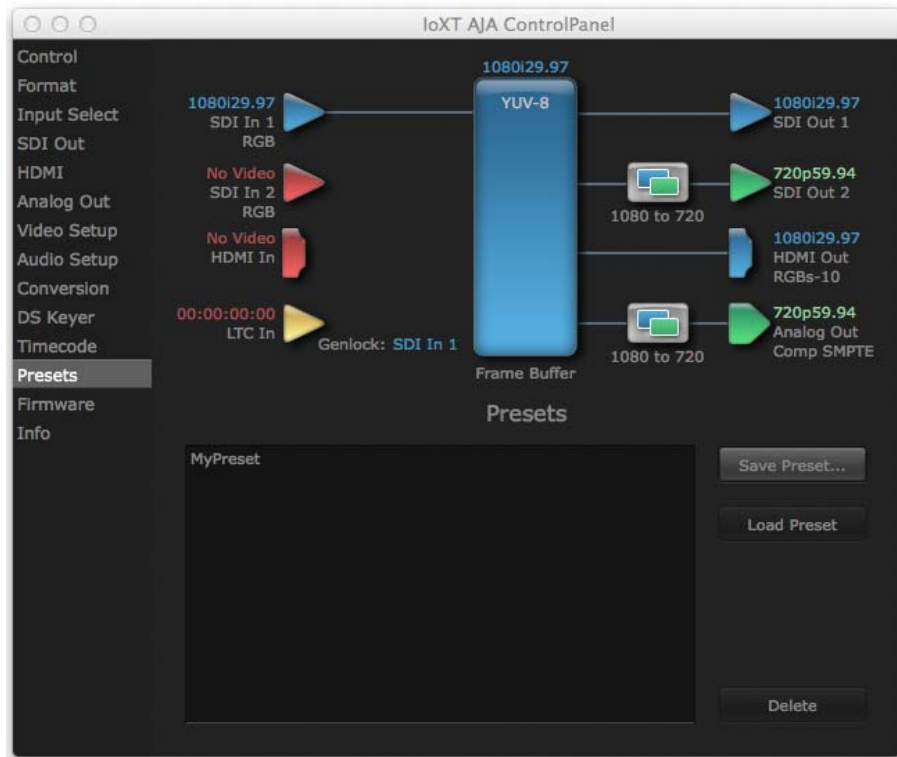
Timecode Burn-in: This pulldown selects whether the timecode value is “burned-in” on video output from lo XT. If set to “OFF”, timecode will not be keyed over the video. If set to “timecode”, then the timecode value will be keyed over the output video. This can be useful for synchronizing, choosing edit points, dailies, and many other purposes.

NOTE: *SMPTE RP 188 defines a standard for the transmission of time code and control code in the ancillary data space of a digital television data stream. Time code information is transmitted in the ancillary data space as defined in ANSI/SMPTE 291M. Multiple codes can be transmitted within a single digital video data stream. Other time information, such as real time clock, DTTR tape timer information, and other user-defined information, may also be carried in the ancillary time code packet instead of time code. The actual information transmitted through the interface is identified by the coding of a distributed binary bit. Equipment manufacturers can use the meta data for different purposes.*

Presets Screen

After configuring the AJA Control Panel screens, you can then save all your settings as a snapshot for later recall—called a *preset*. In this way, you can organize presets for all your typical tasks, eliminating time-robbing manual reconfiguration each time. To save a preset, simply go to the Presets screen and click “Save Preset”. A dialog will be presented asking you for a name; enter a meaningful name and click “OK”. Thereafter the preset will be available under the Control Panel “Presets” list.

Figure 41. Presets Screen

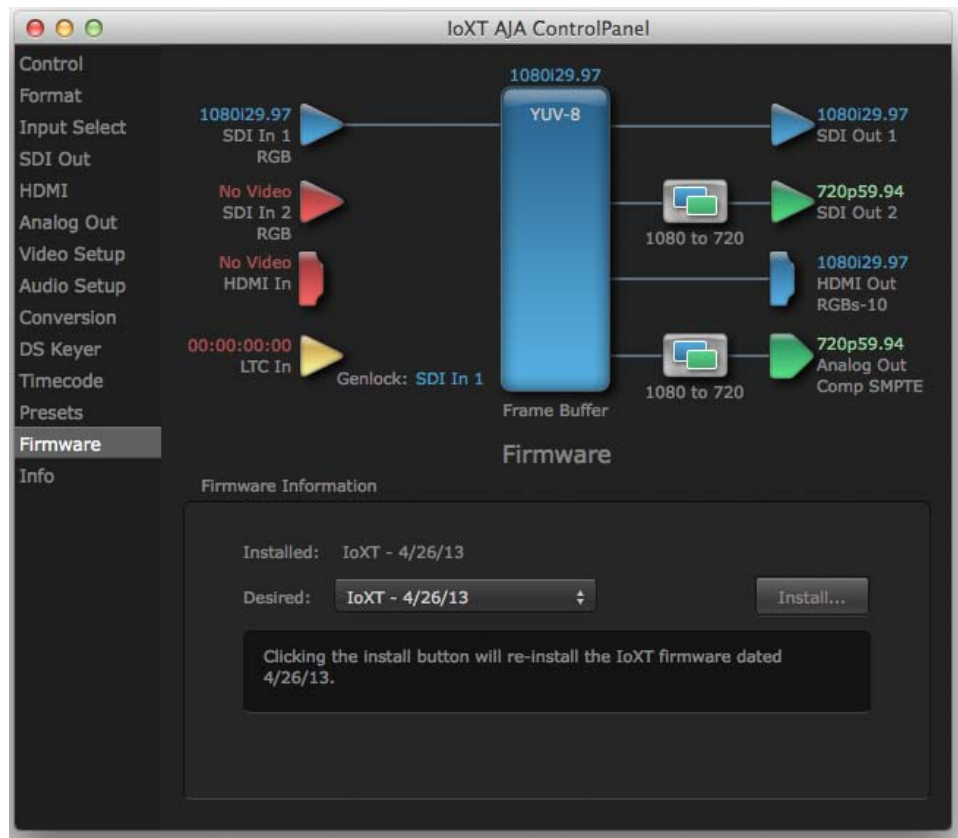


From the Presets screen you can manage your collection of presets easily. To Load or Delete a stored preset, just select it with your mouse and then click the “Load Preset” or “Delete” button respectively.

Firmware Screen

Use the Firmware screen to access the firmware install screen. Click install to erase current firmware and load the firmware version contained in your current driver installation. Note the Installation message shown below.

Figure 42. Firmware Update



You will be required to power-cycle your computer and Io XT to finish the update.

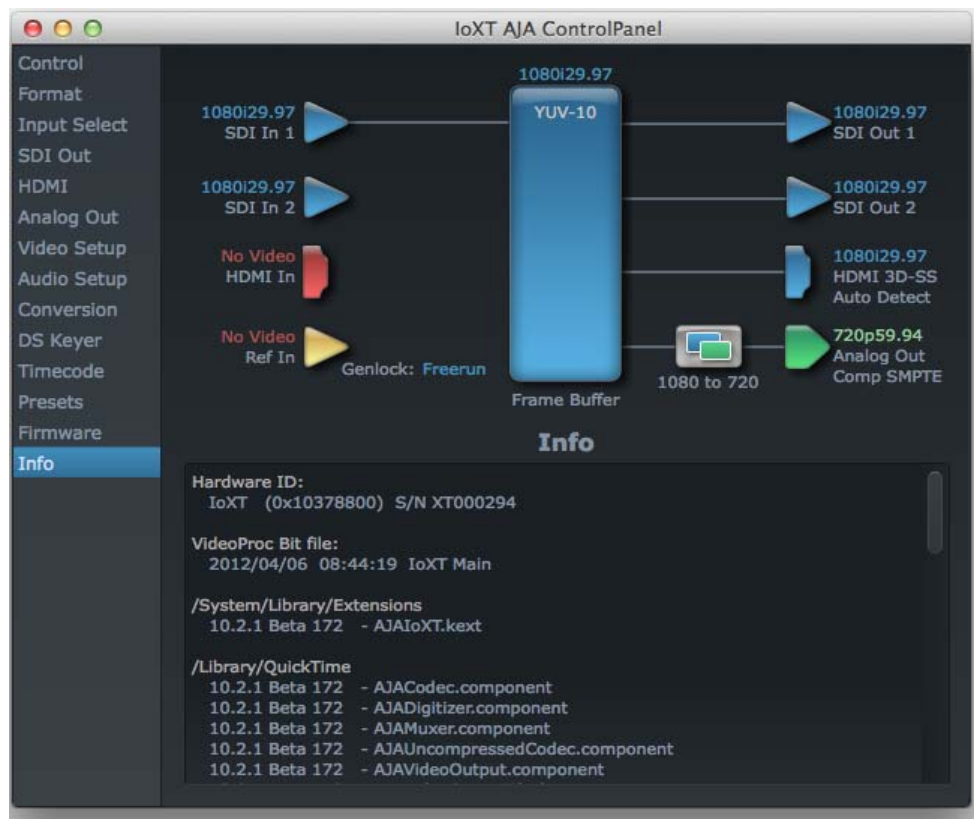
Figure 43. Update Completed



Info Screen

This screen shows the Io XT software files that have been installed on your system. This information may be needed if you talk to an AJA Customer Service representative to determine if files are missing or need updating.

Figure 44. Information Screen in Standard Mode



Chapter 4: Troubleshooting

If You Run Into Problems

One useful way to find the source of problems is to isolate your system to the smallest size where the problem still occurs and then note all the symptoms. This serves to eliminate areas not involved in the problem and makes finding the problem easier.

Once you've noted problem symptoms, look through the following table and see if any of the symptoms are listed. If so, check the items listed. If you later need to call for customer service, let them know all of the things you've tried and when and how the symptoms appeared.

Symptom	Check
Disk RAID cannot keep up (dropped frames etc.).	Ensure the disk system is providing at least 50 MB/second sustained transfer rate
Dropped frames during playback.	1. Virus checking software running in the background (disable it). 2. Scratch drive not set to the RAID.
Dropped frames during record.	1. RAID cannot sustain the data rate of the capture preset codec. 2. Virus checking software running in the background (disable it). 3. Scratch drive not set to the RAID.
Media is not being captured from desired external device.	Check the settings in the <i>Input</i> screen of the lo XT Control Panel application. Also check equipment cables.
Dropped frames during playback	Look for scroll bars in the viewer or canvas as a warning sign that the zoom setting exceeds the fit-t-window.
Video stutter during playback.	RAID cannot sustain data rate.
Red render bar occurs when placing a clip on a sequence.	The sequence setting does not match the clip setting.

Updating Software

Check on the AJA Video website for software updates:

<http://www.aja.com/en/products/io-xt/#support>

If any are available, download the file and read any associated instructions prior to installing the software.

Support

When calling for support, first check over your system configuration and ensure everything is connected properly. Even if you cannot find the cause of the problem, having this information at hand will help when you call AJA Customer Support for help.

If the problem is unknown or you need general help, first contact the dealer where you purchased the product. AJA dealers offer product support for many service requirements.

If the problem is a 3rd-party software operational issue, Mac system issue, then call Apple Customer Support or the 3rd-party software manufacturer for help.

If the problem is an AJA Video Io XT issue, then contact AJA Video Customer Support, see [*“Contacting Support” on page 4.*](#)

Appendix A: Specifications

Video Formats

- 525i 29.97
- 525i23.98*
- 625i 25
- 720P 23.98*, 24 *, 25 *, 29.97*, 30 *, 50, 59.94, 60
- 1080i 25, 29.97, 30
- 1080PsF 23.98, 24, 25, 29.97, 30
- 1080p 23.98, 24, 25, 29.97, 30, 50, 59.94, 60
- 2Kx1080p 23.98, 24, 25
- 2Kx1080PsF 23.98, 24, 25

Software-dependent Formats: * These formats are dependent on specific software functionality and are not normal 'over-the-wire' formats.

720P 23.98, 24, 25, 29.97, 30

Video Input

- 3G/SD/HD SDI, SMPTE-259/292/296/424, 10-bits
- Single Link 4:2:2 or 4:4:4 (1 x 3G BNC)
- dual link HD 4:4:4, (2 x BNC)
- HDMI v1.3
- 1D LUT Support (Mac and PC)

Video Output Digital

- 3G/SD/HD SDI, SMPTE-259/292/296/424
- Single link 4:2:2 or 4:4:4 (1 x BNC)
- dual link HD 4:4:4, (2 x BNC)
- HDMI v1.4, 30/36 bits/pixel, RGB or YUV, 2.25Gbps

Video Output Analog

- Composite/S-Video (Y/C) (1 x BNC/2x BNC+adapter)
- NTSC, NTSCJ, PAL
- Component (3 x BNC)
- HD: YPbPr, RGB
- SD: YPbPr, RGB (component mode)
- SMPTE/EBU N10, Betacam 525 line, Betacam 525J, RGB
- 12-bit D/A, 8x oversampling
- +/- .2 dB to 5.0 MHz Y Frequency Response
- +/- .2 dB to 1 MHz C Frequency Response
- .5% 2T pulse response
- <1% Diff Phase

- <1% Diff Gain
- <1 ns Y/C delay inequity

Audio Input Digital

- 16-channel, 24-bit SMPTE-259 SDI embedded audio, 48kHz sample rate, Synchronous
- 8-channel, 24-bit HDMI embedded audio, 48kHz sample rate, Synchronous

Audio Output Digital

- 16-channel, 24-bit SMPTE-259 SDI embedded audio, 48kHz sample rate, Synchronous
- 8-channel, 24-bit HDMI embedded audio, 48kHz sample rate, Synchronous

Audio Output Analog

- 8-channel, 24-bit D/A analog audio, 48kHz sample rate, balanced (via 8 x XLR on DB-25 breakout cable)
- +24dbu Full Scale Digital (0dbFS)
- +/- 0.2db 20 to 20kHz Frequency Response

Downstream Keyer

- Supports graphics with alpha channel over video, matte or framebuffer, or framebuffer content over incoming video or matte.

Up-Conversion

Hardware 10-bit

Anamorphic: full-screen

Pillar box 4:3: results in a 4:3 image in center of screen with black sidebars

Zoom 14:9: results in a 4:3 image zoomed slightly to fill a 14:9 image with black side bars

Zoom Letterbox: results in image zoomed to fill full screen

Zoom Wide: results in a combination of zoom and horizontal stretch to fill a 16:9 screen; this setting can introduce a small aspect ratio change

Down-conversion

Hardware 10-bit

Anamorphic: full-screen

Letterbox: image is reduced with black top and bottom added to image area with the aspect ratio preserved

Crop: image is cropped to fit new screen size

Cross-conversion

- Hardware 10-bit
- 1080i to 720P
- 720P to 1080i
- 720P to 1080PsF

SD to SD aspect ratio conversion

Letterbox: This transforms SD anamorphic material to a letterboxed image

H Crop: Will produce a horizontally stretched effect on the image; transforms anamorphic SD to full frame

SD Pillarbox: Will produce an image in the center of the screen with black borders on the left and right sides and an anamorphized image in the center

V Crop: Will transform SD letterbox material to an anamorphic image

Reference Input or LTC Input

- 1 BNC assignable to Reference video or LTC input
- Reference:
 - Analog Color Black (1V) or Composite Sync (2 or 4V)
 - Non terminating

Machine Control

RS-422, Sony 9-pin protocol. 9-pin D-connector pinout is as follows:

1. GND
2. RX-
3. TX+
4. GND
5. No Connection
6. GND
7. RX+
8. TX-
9. GND

Shell. GND

Appendix B: Safety and Compliance

Federal Communications Commission (FCC) Compliance Notices

Class A Interference Statement

This equipment has been tested and found to comply with the limits for a Class A digital device, pursuant to Part 15, Subpart B of the FCC Rules. These limits are designed to provide reasonable protection against harmful interference in a commercial installation. This equipment generates, uses, and can radiate radio frequency energy and, if not installed and used in accordance with the instructions, may cause harmful interference to radio communications. However, there is no guarantee that interference will not occur in a particular installation. Operation of this equipment in a residential area is likely to cause harmful interference in which case the user will be required to correct the interference at his own expense. If this equipment does cause harmful interference to radio or television reception, which can be determined by turning the equipment off and on, the user is encouraged to try to correct the interference by one or more of the following measures:

- Reorient or relocate the receiving antenna.
- Increase the separation between the equipment and receiver.
- Connect the equipment into an outlet on a circuit different from that to which the receiver is connected.
- Consult the dealer or an experienced radio/TV technician for help.

FCC Caution

This device complies with Part 15 of the FCC Rules. Operation is subject to the following two conditions: (1) This device may not cause harmful interference, and (2) this device must accept any interference received, including interference that may cause undesired operation.

Canadian ICES Statement

Canadian Department of Communications Radio Interference Regulations

This digital apparatus does not exceed the Class A limits for radio-noise emissions from a digital apparatus as set out in the Radio Interference Regulations of the Canadian Department of Communications. This Class A digital apparatus complies with Canadian ICES-003.

Règlement sur le brouillage radioélectrique du ministère des Communications

Cet appareil numérique respecte les limites de bruits radioélectriques visant les appareils numériques de classe A prescrites dans le Règlement sur le brouillage radioélectrique du ministère des Communications du Canada. Cet appareil numérique de la Classe A est conforme à la norme NMB-003 du Canada.

European Union and European Free Trade Association (EFTA) Regulatory Compliance

This equipment may be operated in the countries that comprise the member countries of the European Union and the European Free Trade Association. These countries, listed in the following paragraph, are referred to as The European Community throughout this document:

AUSTRIA, BELGIUM, BULGARIA, CYPRUS, CZECH REPUBLIC, DENMARK, ESTONIA, FINLAND, FRANCE, GERMANY, GREECE, HUNGARY, IRELAND, ITALY, LATVIA, LITHUANIA, LUXEMBOURG, MALTA, NETHERLANDS, POLAND, PORTUGAL, ROMANIA, SLOVAKIA, SLOVENIA, SPAIN, SWEDEN, UNITED KINGDOM, ICELAND, LICHTENSTEIN, NORWAY, SWITZERLAND

Declaration of Conformity

Marking by this symbol indicates compliance with the Essential Requirements of the EMC Directive of the European Union 2004/108/EC.



This equipment meets the following conformance standards:

Safety:

CB- IEC 60065:2001 + A1:2005

NRTL - UL 60065:2003 R11.06, CSA C22.2 NO. 60065:2003 + A1:06

GS - EN 60065:2002 + A1

Additional licenses issued for specific countries available on request.

Emissions:

EN 55103-1: 1996

EN61000-3-2:2006, EN61000-3-3:1995 +A1:2001 +A2:2005

CISPR 22: 2006

Immunity:

EN 55103-2: 1996

EN61000-4-2:1995 + A1:1999 + A2:2001, EN61000-4-3:2006, EN61000-4-4:2004,

EN 61000-4-5: 2005, EN 61000-4-6:2007, EN61000-4-11:2004

The product is also licensed for additional country specific standards as required for the International Marketplace.



Warning!

This is a Class B product. In a domestic environment, this product may cause radio interference, in which case, the user may be required to take appropriate measures.

Achtung! Dieses ist ein Gerät der Funkstörgrenzwertklasse B. In Wohnbereichen können bei Betrieb dieses Gerätes Rundfunkstörungen auftreten, in welchen Fällen der Benutzer für entsprechende Gegenmaßnahmen verantwortlich ist.

Attention! Ceci est un produit de Classe B. Dans un environnement domestique, ce produit risque de créer des interférences radioélectriques, il appartiendra alors à l'utilisateur de prendre les mesures spécifiques appropriées.

Korean Compliance Statement

해당 무선설비는 운용 중 전파혼신 가능성이 있음
This radio equipment can be crossed during operation.

해당 무선설비는 전파혼신 가능성이 있으므로 인명안전과 관련된 서비스는 할 수 없습니다.
This radio equipment cannot provide a service relevant to the human life safety, as it can be crossed.

1) Class A ITE

A급 기기 (업무용 방송통신기기)	이 기기는 업무용 (A 급) 으로 전자파적합등록을 한 기기이오니 판매자 또는 사용자는 이 점을 주의하시기 바라며, 가정외의 지역에서 사용하는 것을 목적으로 합니다.
-----------------------	---

1) Class A device

Class A (Broadcasting and Communication Equipment for Business Use)	Please note that this equipment has obtained EMC registration for business use (Class A), and it is intended to use in other than home area.
--	--

Taiwan Compliance Statement

警告使用者：
這是甲類的資訊產品，在居住的環境中使用時，可能會造成射頻干擾，在這種情況下，使用者會被要求採取某些適當的對策。

This is a Class A product based on the standard of the Bureau of Standards, Metrology and Inspection (BSMI) CNS 13438, Class A.

Japanese Compliance Statement

です。この装置は、家庭環境で使用することを目

This is a Class A product based on the standard of the VCCI Council (VCCI V-3/2008.04). If this equipment is used in a domestic environment, radio interference may occur, in which case, the user may be required to take corrective actions.

Translated caution statements, warning conventions and warning messages

The following caution statements, warning conventions, and warning messages apply to this product and manual.



Warning Symbol



Hazard Warning



Caution Symbol

Before operating your AJA unit, read the instructions in this document



Warning!

Read and follow all warning notices and instructions marked on the product or included in the documentation.

Avertissement ! Lisez et conformez-vous à tous les avis et instructions d'avertissement indiqués sur le produit ou dans la documentation.

Warnung! Lesen und befolgen Sie die Warnhinweise und Anweisungen, die auf dem Produkt angebracht oder in der Dokumentation enthalten sind.

¡Advertencia! Lea y siga todas las instrucciones y advertencias marcadas en el producto o incluidas en la documentación.

Aviso! Leia e siga todos os avisos e instruções assinalados no produto ou incluídos na documentação.

Avviso! Leggere e seguire tutti gli avvisi e le istruzioni presenti sul prodotto o inclusi nella documentazione.



Warning!

Do not use this device near water and clean only with a dry cloth.

Avertissement! N'utilisez pas cet appareil près de l'eau et nettoyez-le seulement avec un tissu sec..

Warnung! Das Gerät nicht in der Nähe von Wasser verwenden und nur mit einem trockenen Tuch säubern.

¡Advertencia! No utilice este dispositivo cerca del agua y límpielo solamente con un paño seco.

Aviso! Não utilize este dispositivo perto da água e limpe-o somente com um pano seco.

Avviso! Non utilizzare questo dispositivo vicino all'acqua e pulirlo soltanto con un panno asciutto.



Warning!

Do not block any ventilation openings. Install in accordance with the manufacturer's instructions.

Avertissement ! Ne bloquez aucune ouverture de ventilation. Suivez les instructions du fabricant lors de l'installation.

Warnung! Die Lüftungsöffnungen dürfen nicht blockiert werden. Nur gemäß den Anweisungen des Herstellers installieren.

¡Advertencia! No bloquee ninguna de las aberturas de la ventilación. Instale de acuerdo con las instrucciones del fabricante.

Aviso! Não obstrua nenhuma das aberturas de ventilação. Instale de acordo com as instruções do fabricante.

Avviso! Non ostruire le aperture di ventilazione. Installare in conformità con le istruzioni del fornitore.



Warning!

Do not install near any heat sources such as radiators, heat registers, stoves, or other apparatus (including amplifiers) that produce heat.

Avertissement ! N'installez pas l'appareil près d'une source de chaleur telle que des radiateurs, des bouches d'air de chauffage, des fourneaux ou d'autres appareils (amplificateurs compris) qui produisent de la chaleur.

Warnung! Nicht in der Nähe von Wärmequellen wie Heizkörpern, Heizregistern, Öfen oder anderen Wärme erzeugenden Geräten (einschließlich Verstärkern) aufstellen.

¡Advertencia! No instale cerca de fuentes de calor tales como radiadores, registros de calor, estufas u otros aparatos (incluidos amplificadores) que generan calor.

Aviso! Não instale perto de nenhuma fonte de calor tal como radiadores, saídas de calor, fogões ou outros aparelhos (incluindo amplificadores) que produzam calor.

Avviso! Non installare vicino a fonti di calore come termosifoni, diffusori di aria calda, stufe o altri apparecchi (amplificatori compresi) che emettono calore.



Warning!

Refer all servicing to qualified service personnel. Servicing is required when the device has been damaged in any way, such as power-supply cord or plug is damaged, liquid has been spilled or objects have fallen into the device, the device has been exposed to rain or moisture, does not operate normally, or has been dropped.

Avertissement ! Référez-vous au personnel de service qualifié pour tout entretien. L'entretien est exigé quand l'appareil a été endommagé de quelque manière que ce soit, par exemple lorsque le cordon d'alimentation ou la prise sont endommagés, que du liquide a été versé ou des objets sont tombés dans l'appareil, que l'appareil a été exposé à la pluie ou à l'humidité, ne fonctionne pas normalement ou est tombé.

Warnung! Das Gerät sollte nur von qualifizierten Fachkräften gewartet werden. Eine Wartung ist fällig, wenn das Gerät in irgendeiner Weise beschädigt wurde, wie bei beschädigtem Netzkabel oder Netzstecker, falls Flüssigkeiten oder Objekte in das Gerät gelangen, das Gerät Regen oder Feuchtigkeit ausgesetzt wurde, nicht ordnungsgemäß funktioniert oder fallen gelassen wurde.

¡Advertencia! Consulte al personal calificado por cuestiones de reparación. El servicio de reparación se requiere cuando el dispositivo ha recibido cualquier tipo de daño, por ejemplo cable o espigas dañadas, se ha derramado líquido o se han caído objetos dentro del dispositivo, el dispositivo ha sido expuesto a la lluvia o humedad, o no funciona de modo normal, o se ha caído.

Aviso! Remeta todos os serviços de manutenção para o pessoal de assistência qualificado. A prestação de serviços de manutenção é exigida quando o dispositivo foi danificado mediante qualquer forma, como um cabo de alimentação ou ficha que se encontra danificado/a, quando foi derramado líquido ou caíram objectos sobre o dispositivo, quando o dispositivo foi exposto à chuva ou à humidade, quando não funciona normalmente ou quando foi deixado cair.

Avviso! Fare riferimento al personale qualificato per tutti gli interventi di assistenza. L'assistenza è necessaria quando il dispositivo è stato danneggiato in qualche modo, ad esempio se il cavo di alimentazione o la spina sono danneggiati, è stato rovesciato del liquido è stato rovesciato o qualche oggetto è caduto nel dispositivo, il dispositivo è stato esposto a pioggia o umidità, non funziona correttamente o è caduto.



Caution!

This device is a Class A product. Operation of this equipment in a residential area is likely to cause harmful interference, in which case users will be required to take whatever measures may be necessary to correct the interference at their own expense.

Attention! Le périphérique est un produit de Classe A. Le fonctionnement de cet équipement dans une zone résidentielle risque de causer des interférences nuisibles, auquel cas l'utilisateur devra y remédier à ses propres frais.

Achtung! Dies ist ein Gerät der Klasse A. Bei Einsatz des Geräts in Wohngebieten kann es Störungen des Radio- und Fernsehempfangs verursachen. In diesem Fall muss der Benutzer alle notwendigen Maßnahmen ergreifen, die möglicherweise nötig sind, um die Störungen auf eigene Rechnung zu beheben.

¡Precaución! Este es un producto clase A. El uso de este equipo en áreas residenciales puede causar interferencias nocivas, en cuyo caso, se requerirá que los usuarios tomen cualquier medida necesaria para corregir la interferencia por cuenta propia.

Cuidado! Este dispositivo é um produto Classe A. Operar este equipamento em uma área residencial provavelmente causará interferência prejudicial; neste caso, espera-se que os usuários tomem as medidas necessárias para corrigir a interferência por sua própria conta.

Attenzione! Questo dispositivo è un prodotto di Classe A. Il funzionamento di questo apparecchio in aree residenziali potrebbe causare interferenze dannose, nel cui caso agli utenti verrà richiesto di adottare tutte le misure necessarie per porre rimedio alle interferenze a proprie spese.



Warning!

Disconnect the external AC power supply line cord(s) from the mains power before moving the unit.

Avertissement! Retirez le ou les cordons d'alimentation en CA de la source d'alimentation principale lorsque vous déplacez l'appareil.

Warnung! Trennen Sie die Wechselstrom-Versorgungskabel vom Netzstrom, bevor Sie das Gerät verschieben.

¡Advertencia! Cuando mueva la unidad desenchufe de la red eléctrica el/los cable(s) de la fuente de alimentación CA tipo brick.

Advertência! Remova os cabos CA de alimentação brick da rede elétrica ao mover a unidade.

Avvertenza! Scollegare il cavo dell'alimentatore quando si sposta l'unità.



Hazard Warning!

High Voltage. This situation or condition can cause injury due to electric shock.

Avertissement ! Tension élevée. Cette situation ou condition peut causer des blessures dues à un choc électrique.

Warnung! Hochspannung. Diese Situation oder Bedingung kann zu Verletzungen durch Stromschlag führen.

¡Advertencia! Alto voltaje . Esta situación o condición puede causar lesiones debidas a una descarga eléctrica.

Aviso! Alta Tensão . Esta situação ou condição pode causar danos devido a choques elétricos.

Avviso! Alta tensione. Questa situazione o condizione può causare lesioni a causa di scosse elettriche.

**Warning!**

Only use attachments and accessories specified and/or sold by the manufacturer.

Avertissement ! Utilisez seulement les attaches et accessoires spécifiés et/ou vendus par le fabricant.

Warnung! Verwenden Sie nur Zusatzgeräte und Zubehör angegeben und / oder verkauft wurde durch den Hersteller.

¡Advertencia! Utilice solamente los accesorios y conexiones especificados y/o vendidos por el fabricante.

Aviso! Utilize apenas equipamentos/acessórios especificados e/ou vendidos pelo fabricante.

Avviso! Utilizzare soltanto i collegamenti e gli accessori specificati e/o venduti dal produttore.

**Warning!**

Do not defeat the safety purpose of the polarized or grounding-type plug. A polarized plug has two blades with one wider than the other. A grounding type plug has two blades and a third grounding prong. The wide blade or the third prong are provided for your safety. If the provided plug does not fit into your outlet, consult an electrician for replacement of the obsolete outlet.

Avertissement ! La sécurité de la prise polarisée ou de la prise de type mise à la terre ne doit en aucun cas être empêchée de fonctionner. Une prise polarisée a deux broches, l'une étant plus large que l'autre. Une prise de type mise à la terre a deux broches et une troisième broche pour la mise à la terre. La broche large ou la troisième broche sont fournies pour votre sécurité. Si la prise fournie ne s'insère pas dans votre prise femelle, consultez un électricien pour le remplacement de la prise femelle obsolète.

Warnung! Der Sicherheitszweck des gepolten bzw. Schukosteckers ist zu berücksichtigen. Ein gepolter Stecker verfügt über zwei Pole, von denen einer breiter als der andere ist. Ein Schukostecker verfügt neben den zwei Polen noch über einen dritten Pol zur Erdung. Der breite Pol bzw. der Erdungspol dienen der Sicherheit. Wenn der zur Verfügung gestellte Stecker nicht in Ihren Anschluss passt, konsultieren Sie einen Elektriker, um den veralteten Anschluss zu ersetzen.

¡Advertencia! No eche por tierra la finalidad del tipo de enchufe polarizado con conexión a tierra. Un enchufe polarizado tiene dos espigas, una más ancha que la otra. Un enchufe con conexión a tierra tiene dos espigas iguales y una tercera espiga que sirve para la conexión a tierra. La espiga ancha, o la tercera espiga, sirven para su seguridad. Si el enchufe suministrado no encaja en el tomacorriente, consulte con un electricista para reemplazar el tomacorriente obsoleto.

Aviso! Não anule a finalidade da segurança da ficha polarizada ou do tipo ligação terra. Uma ficha polarizada tem duas lâminas sendo uma mais larga do que a outra. Uma ficha do tipo de ligação à terra tem duas lâminas e um terceiro terminal de ligação à terra. A lâmina larga ou o terceiro terminal são fornecidos para sua segurança. Se a ficha fornecida não couber na sua tomada, consulte um electricista para a substituição da tomada obsoleta.

Avviso! Non compromettere la sicurezza della spina polarizzata o con messa a terra. Una spina polarizzata ha due spinotti, di cui uno più largo. Una spina con messa a terra ha due spinotti e un terzo polo per la messa a terra. Lo spinotto largo o il terzo polo sono forniti per motivi di sicurezza. Se la spina fornita non si inserisce nella presa di corrente, contattare un elettricista per la sostituzione della presa obsoleta.



Warning!

Since the Mains plug is used as the disconnection for the device, it must remain readily accessible and operable.

Avertissement ! Puisque la prise principale est utilisée pour débrancher l'appareil, elle doit rester aisément accessible et fonctionnelle.

Warnung! Da der Netzstecker als Trennvorrichtung dient, muss er stets zugänglich und funktionsfähig sein.

¡Advertencia! Puesto que el enchufe de la red eléctrica se utiliza como dispositivo de desconexión, debe seguir siendo fácilmente accesible y operable.

Aviso! Dado que a ficha principal é utilizada como a desconexão para o dispositivo, esta deve manter-se prontamente acessível e funcional.

Avviso! Poiché il cavo di alimentazione viene usato come dispositivo di sconnessione, deve rimanere prontamente accessibile e operabile.



Warning!

Protect the power cord from being walked on or pinched particularly at plugs, convenience receptacles, and the point where they exit from the device.

Avertissement ! Protégez le cordon d'alimentation pour que l'on ne marche pas dessus ou qu'on le pince, en particulier au niveau des prises mâles, des réceptacles de convenance, et à l'endroit où il sort de l'appareil.

Warnung! Es muss verhindert werden, auf das Netzanschlusskabel zu treten oder dieses zu knicken, besonders an den Steckern, den Steckerbuchsen und an dem Punkt, an dem das Kabel aus dem Gerät austritt.

¡Advertencia! Puesto que el enchufe de la red eléctrica se utiliza como dispositivo de desconexión, debe seguir siendo fácilmente accesible y operable.

Aviso! Proteja o cabo de alimentação de ser pisado ou de ser comprimido particularmente nas fichas, em tomadas de parede de conveniência e no ponto de onde sai do dispositivo.

Avviso! Proteggere il cavo di alimentazione in modo che nessuno ci cammini sopra e che non venga schiacciato soprattutto in corrispondenza delle spine e del punto in cui esce dal dispositivo.

**Warning!**

Unplug this device during lightning storms or when unused for long periods of time.

Avertissement ! Débranchez cet appareil pendant les orages avec éclairs ou s'il est inutilisé pendant de longues périodes.

Warnung! Das Gerät ist bei Gewitterstürmen oder wenn es über lange Zeiträume ungenutzt bleibt vom Netz zu trennen.

¡Advertencia! Desenchufe este dispositivo durante tormentas eléctricas o cuando no se lo utilice por largos periodos del tiempo.

Aviso! Desconecte este dispositivo da tomada durante trovoadas ou quando não é utilizado durante longos períodos de tempo.

Avviso! Utilizzare soltanto i collegamenti e gli accessori specificati e/o venduti dal produttore, quali il treppiedi e l'esoscheletro.

**Warning!**

Do not open the chassis. There are no user-serviceable parts inside. Opening the chassis will void the warranty unless performed by an AJA service center or licensed facility.

Avertissement! Ne pas ouvrir le châssis. Aucun élément à l'intérieur du châssis ne peut être réparé par l'utilisateur. La garantie sera annulée si le châssis est ouvert par toute autre personne qu'un technicien d'un centre de service ou d'un établissement agréé AJA.

Warnung! Öffnen Sie das Gehäuse nicht. Keine der Geräteteile können vom Benutzer gewartet werden. Durch das Öffnen des Gehäuses wird die Garantie hinfällig, es sei denn, solche Wartungsarbeiten werden in einem AJA-Service-Center oder einem lizenzierten Betrieb vorgenommen.

¡Advertencia! No abra el chasis. El interior no contiene piezas reparables por el usuario. El abrir el chasis anulará la garantía a menos que se lo haga en un centro de servicio AJA o en un local autorizado.

Advertência! Não abra o chassi. Não há internamente nenhuma peça que permita manutenção pelo usuário. Abrir o chassi anula a garantia, a menos que a abertura seja realizada por uma central de serviços da AJA ou por um local autorizado.

Avvertenza! Non aprire lo chassis. All'interno non ci sono parti riparabili dall'utente. L'apertura dello chassis invaliderà la garanzia se non viene effettuata da un centro ufficiale o autorizzato AJA.

**Caution!**

For correct performance, always power up the lo XT before starting your computer and power down your computer before powering down the lo XT.

Attention! Pour obtenir de bonnes performances, allumez toujours lo XT avant de démarrer l'ordinateur et éteignez ce dernier avant d'éteindre lo XT.

Achtung! Um eine fehlerfreie Arbeit sicherzustellen, schalten Sie lo XT ein, bevor Sie den Computer starten, und fahren Sie den Computer herunter, bevor Sie lo XT ausschalten.

¡Precaución! Para un correcto desempeño, siempre encienda lo XT antes de iniciar la computadora y apague la computadora antes de apagar lo XT.

Cuidado! Para o desempenho correto, sempre ligue o lo XT antes de ligar seu computador e desligue o computador antes de desligar o lo XT.

Attenzione! Per prestazioni ottimali, alimentare sempre XT prima di avviare il computer e spegnere il computer prima di spegnere XT.

Warranty and Liability Information

Limited Warranty

AJA Video warrants that the product, not including hard-disk based Storage Modules (HDD), will be free from defects in materials and workmanship for a period of three years from the date of purchase. AJA Video warrants that the hard-disk based Storage Modules (HDD), will be free from defects in materials and workmanship for a period of one year from the date of purchase. If a product proves to be defective during this warranty period, AJA Video, at its option, will either repair the defective product without charge for parts and labor, or will provide a replacement in exchange for the defective product.

To obtain service under this warranty, the Customer must notify AJA Video of the defect before expiration of the warranty period and make suitable arrangements for the performance of service by contacting AJA Video support through the channels set forth on the support contacts web page at <http://www.aja.com/support/index.php>. Except as stated, the Customer shall bear all shipping, packing, insurance and other costs, excluding parts and labor, to effectuate repair. Customer shall pack and ship the defective product to a service center designated by AJA Video, with shipping charges prepaid. AJA Video shall pay to return the product to Customer but only if to a location within the country in which the AJA Video service center is located.

This warranty shall not apply to any defect, failure or damage caused by negligent, inadequate or improper use, handling or maintenance. Without limiting the foregoing, AJA Video shall not be obligated to furnish service under this warranty or repair any damage or malfunction a) resulting from attempts by personnel other than AJA Video representatives to install, repair or service the product, b) resulting from improper use or connection to incompatible equipment, c) caused by the use of non-AJA Video parts or supplies, d) if the product has been modified or integrated with other products when the effect of such a modification or integration increases the time or difficulty of servicing the product, or (e) resulting from being dropped or otherwise subjected to undue force, exposure to moisture or other corrosive or conductive substances, exposure to strong magnetic fields, use with improperly regulated power supplies, exposure to electric shock, use in temperatures outside the specified operating range, or otherwise failing to treat the product in accordance with the standard of care appropriate to sensitive and delicate electronic equipment.

EXCEPT AS STATED ABOVE, AJA VIDEO AND ITS VENDORS DISCLAIM IN THEIR ENTIRETY ALL OTHER WARRANTIES, EXPRESS OR IMPLIED, INCLUDING WITHOUT LIMITATION ALL WARRANTIES OF MERCHANTABILITY OR FITNESS FOR A PARTICULAR PURPOSE. AJA VIDEO'S RESPONSIBILITY TO REPAIR OR REPLACE TIMELY REPORTED DEFECTIVE PRODUCTS IS THE WHOLE AND EXCLUSIVE REMEDY CUSTOMER IS PROVIDED.

THE PRODUCT IS NOT INTENDED, STATED, OR WARRANTED TO OPERATE UNINTERRUPTED OR ERROR-FREE. YOU UNDERSTAND AND ACKNOWLEDGE THAT THE PRODUCT IS NOT INTENDED TO BE USED AS THE SOLE OR PRIMARY DATA SOURCE OR TARGET FOR CRITICAL DATA, AND THAT IT IS YOUR RESPONSIBILITY TO IMPLEMENT REDUNDANT CAPTURE AND BACKUP SYSTEMS AS APPROPRIATE.

Limitation of Liability

UNDER NO CIRCUMSTANCES SHALL AJA VIDEO BE LIABLE IN ANY WAY FOR ANY LOST, CORRUPTED OR DESTROYED DATA, FOOTAGE OR WORK, OR FOR ANY OTHER INDIRECT, SPECIAL, INCIDENTAL OR CONSEQUENTIAL DAMAGES, OR FOR ANY THIRD PARTY CLAIM, IN CONNECTION WITH THE PRODUCT, WHETHER RESULTING FROM DEFECTS IN THE PRODUCT, SOFTWARE OR HARDWARE FAILURE, OR ANY OTHER CAUSE WHATSOEVER, EVEN IF AJA VIDEO HAS BEEN ADVISED OF THE POSSIBILITY OF SUCH DAMAGES. AJA VIDEO'S LIABILITY IN CONNECTION WITH THIS PRODUCT SHALL UNDER NO CIRCUMSTANCES EXCEED THE PURCHASE PRICE PAID FOR THE PRODUCT.

Index

Numerics

24 frames-per-second to 30 conversion 42
3D output 38
9-pin D-connector 54

A

alpha channel 44
alpha channel, Video + Key 37
analog audio 41
analog audio output 39
analog component 40
analog component output 39
analog composite 40
Analog Format 39, 40, 42
Analog Out Screen 39
Analog Out Screen Settings 39, 40
Anamorphic 33
anamorphic SD to full frame SD 33
aspect ratio conversion 33
Audio 7
Audio Input 35
audio input, pulldown menu 35
Audio Out 45

B

Betacam 10
Black 30
black borders 33
black burst 10
Black Level 40, 42
black Level pulldown menu 40
Blue 27
borders, black 33
Box 8

C

Cable Connections 9
Cabling the System 12
camcorders 10
Chassis Connections 13
CineForm Codec 38
color matte 44
Color Meanings, Control Panel 27
color selection dialog 45
Colorspace choices 43
Component Analog Video Out 12
Component/Composite 10
composite 39
composite output 40
Configuration 14

Connector Descriptions 9
Connectors 9
Control Panel, AJA Software 8
Control Panel, Tabbed Screens 29
Control Screen 44
Control Screen Settings 30
Conversion 6
Conversion Icons, Control Panel 28
conversion, YUV-RGB 43
Crop 33
crossconversion 6, 33
Custom LUTs 43
customer service 50

D

DB9 12
DE9 10
Default Kona Output 30
Digital System 12
Down (Conversion) 33
downconversion 6, 33
downstream keyer 44
DS Keyer 44
Dual Link 7
DVCProHD Acceleration 7

E

EBU N10 10

F

Foreground pre-multiplied (checkbox) 45
Format Screen Settings 32
format, primary 10
format, secondary 26
Formats Screen 32
Frame Buffer over Matte 44
Frame Buffer over Video In 44
Framebuffer 27
Freerun 31
Full Frame 42
full-screen 33

G

Gamma 43
Gatekeeper 14
Genlock and Your System 24
Getting Help 50
Graphic File 45
graphic file, test pattern output 31
Graphic over Frame Buffer 44

- Graphic over Matte 44
- Graphic over Video In 44
- Green 27

H

- H Crop 33
- Hardware 7
- HDMI audio output 38
- HDMI output 38
- Hold Last Application 31
- Horizontal reference 31
- horizontally stretched 33
- house reference 10
- house reference sync 12
- house sync 24

I

- Icons 28
- Icons, Control Panel 28
- Info Screen 49
- Input Pass through 30
- Input Screen 35
- Input Screen Settings 35
- Input/Output 28
- Installation Overview 11
- Installer Screen 16
- Installing Io Software 14
- IRE 40

K

- keyed video 44
- KONA 3 Formats 32

L

- Letterbox 33
- letterbox 33
- Linear 43
- Load File 45
- Log On Authenticate Prompt 15

M

- Machine Control 10
- Machine Control, pinout 54
- Manual 10
- Matte 44
- Matte Color 45
- Monitor Audio 39
- monitoring, analog outputs 39
- motion adaptive de-interlacing 6
- Mountain Lion 14

O

- offset, video adjustment (timing) 31
- output video black 30

P

- pattern, test 31
- Pillar box 33
- Pillarbox 33
- pinout, RS-422 D-connector 54
- Presets 47
- Primary 36
- Primary Format 27
- Primary format 10
- problem symptoms 50
- problems, what to do if you encounter 50
- progressive frame 33
- progressive segmented frame 32
- psf 32

Q

- QuickTime™ Drivers 7

R

- Rec 601 43
- Rec 709 43
- Red 27
- Ref In 31
- Ref Loop 12
- Reference Video 10
- Requirements, System 8
- RP 188 definition 46
- RP-188 Timecode 46
- RS-422 54
- RS422 10

S

- SD letterbox material to an anamorphic image 33
- SD to SD aspect ratio conversion 33
- SDI cables 12
- Secondary 36
- select audio 45
- set up 11
- Shipping Box Contents 8
- sidebars 33
- Single Field 42
- SMPTE protocol 10
- SMPTE RP 188 46
- SMPTE-372M compliant 7
- snapshot, Control Panel settings 47
- Software 7
- software files that have been installed 49
- Software installation 14
- Software License Agreement Screen 17
- software updates 50
- software, 3rd-party 25
- Sony 10

- Specifications 52
- Support 51
- support 51
- Symptoms, problem 50
- sync generator 10
- synchronizing other video equipment 10
- system configuration, Control Panel 26
- System Connections 13
- System software 14

T

- Test Pattern 31
- Timecode Offset 46
- Timecode Screen 40, 45
- Timecode Screen Settings 46
- timing adjustment 31
- Timing adjustment, Control Panel 31
- troubleshooting 50

U

- unpack 9
- upconversion 33
- upconverter 6
- Updating Software 50
- Use 48
- user and password 15
- User Bits, RP-188 46

V

- V Crop 33
- Vertical reference 31
- Video Format 32
- Video Input 35
- video input source 31
- Video Monitor 12
- video path 28
- Video+Key 37
- VTR 12
- VTR RS-422 Control Port 10
- VTRs, 10

Y

- Y/C output 39
- Y/R-Y/B-Y 10
- Yellow 27
- YPbPr 10
- YUV 10
- YUV-RGB Conversion 43

Z

- Zoom 33
- Zoom Letterbox 33
- Zoom Wide 33